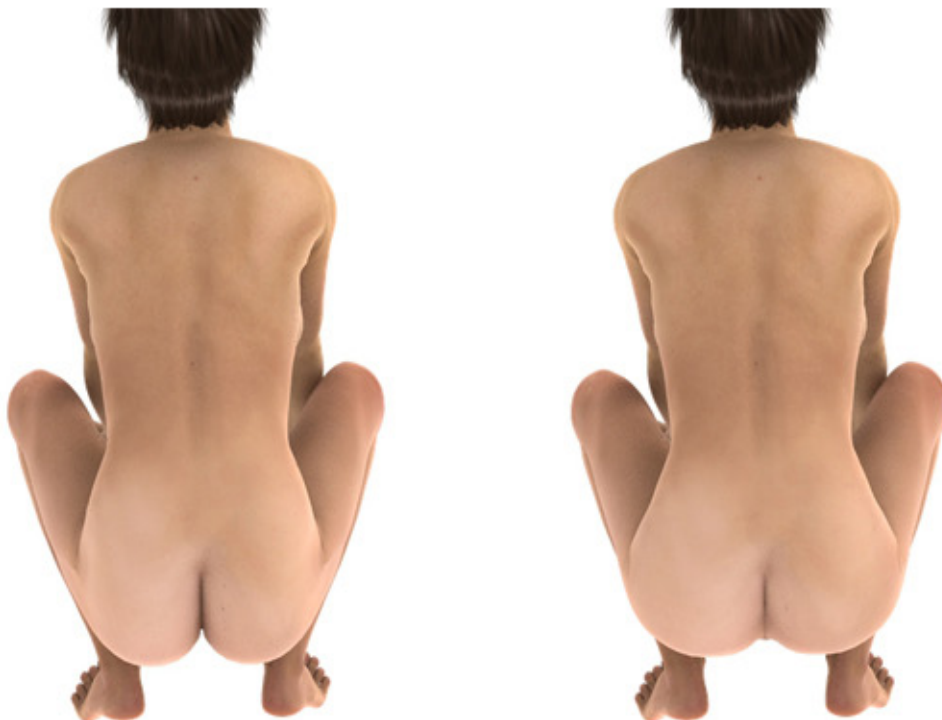




BENDMORPHSV4

IN THIS TUTORIAL I WILL BE SHOWING YOU THE BASICS OF HOW TO USE THIS PRODUCT.



HERE I JUST USED THE BENDFIX MORPH COMBINED WITH A LITTLE BIT OF THE GENGAP MORPH.



WHEN YOU HAVE A POSE WHERE ONE LEG IS STRAIGHT WHILE USING THE BENDFIX MORPH, SIMPLY DIAL DOWN THE SEPERATE GLUTE BENDFIX MORPH TO ELIMINATE IT ON THAT LEG. COMBINE IT WITH THE GLUTE FAT TO GET THE LOOK YOU WANT. USE THE VALUES TO YOUR DISCRETION.



BENDMORPHS WITH NO HEAVY HELPER



WITH HEAVY HELPER

WHEN USING BODY SHAPES ON V4, HELPERS COME INTO PLAY. HERE I HAVE THE HEAVY MORPH DIALED UP WITH THE REGULAR BENDMORPHS. IN ORDER FOR IT TO CATER FOR THAT SHAPE, THE HEAVY HELPER NEEDS TO BE DIALED UP AS WELL. WITH MIXED SHAPES, JUST PLAY WITH THE HELPERS TO SEE WHAT GIVES YOU THE BEST RESULTS.



NORMAL GENGAP MORPH



X&M GENGAP MORPH

WHEN USING THESE MORPHS ON A X&M PERFECT V4 OR ONE THAT USES THE PERFECT BOOTY AND THIGH MORPHS, USE THE BENDMORPHS AS NORMAL. THE ONLY DIFFERENCE IS THAT INSTEAD OF USING THE NORMAL GENGAP MORPH, YOU USE THE X&M GENGAP ONE LOCATED UNDER HELPERS. ALL THE OTHER MORPHS WORK IN THEIR USUAL MANNER.

THAT CONCLUDES THE BASIC TUTORIAL. THE OTHER MORPHS ARE PRETTY SELF EXPLANATORY.

PM ME IF YOU HAVE ANY QUESTIONS.
ENJOY:)



