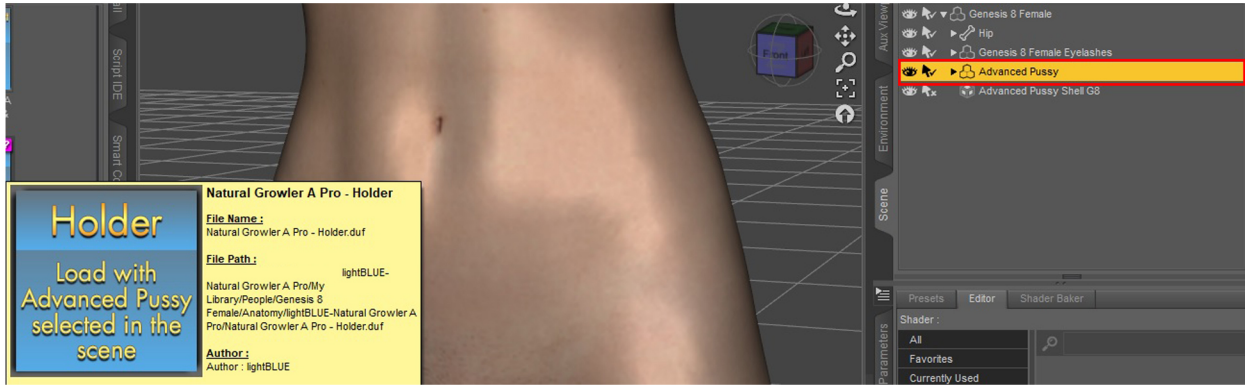


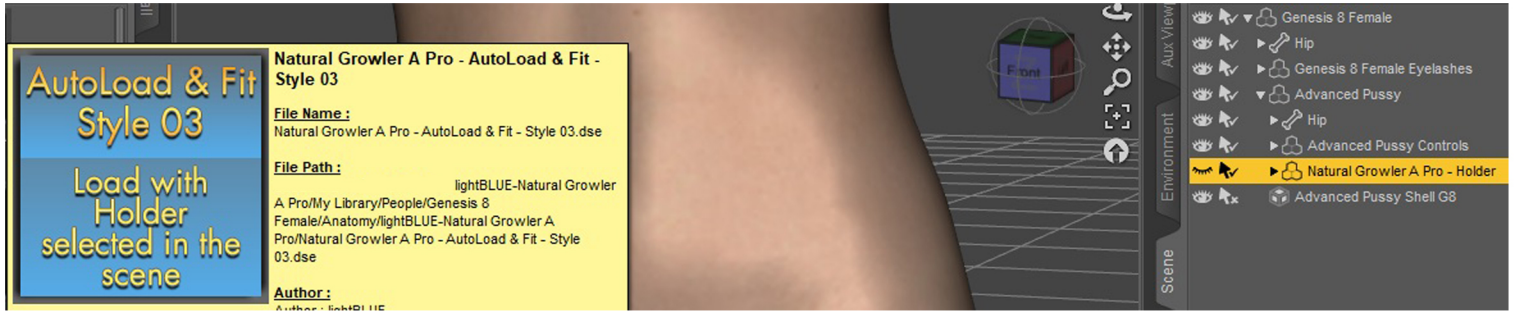
INSTRUCTIONS

1. First load the "Holder" with Advanced Pussy selected in the scene. It should automatically fit to the Advanced Pussy.

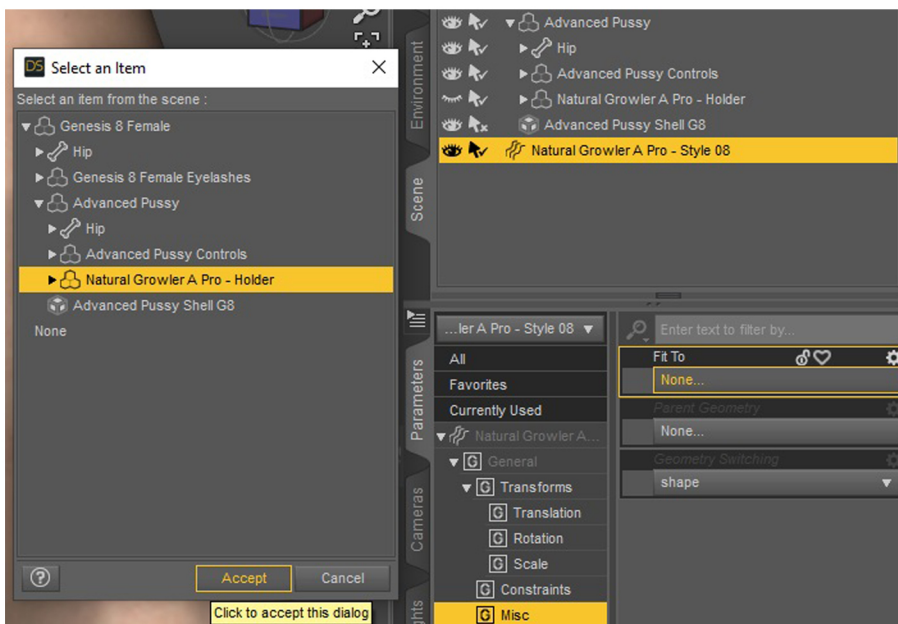


2. Loading the hair props - AUTOLOADING or MANUAL

AUTOLOADING - Select "Holder" in the scene and then double-click on one of the AutoLoad & Fit scripts. Hair prop will be fitted automatically to the holder and positioned in the right place.



MANUAL LOADING - Load the hair prop of your choice and with the hair prop selected go to Parameters/General/Misc and under Fit To chose "Holder", this will allow the hair to follow the figure.



If the figure is not a default Genesis or if it is not in the default pose, the hair might not be in the proper position when you load it, in that case, go to the Parameters/General/Transforms and toggle on/off the Apply Transformation option. (if you are using AutoLoad & Fit scripts then the script will do this for you as well)

Parenting is NOT needed in any case and may cause undesired behaviour!

3. In order to load materials hair prop should be selected in "scene" pane. The hair color will be visible in renders although it is appearing black in viewport.