

# CREAM CASCADE FOR G8M DICKTATOR

~~Tutorial~~

## 1 - What is Cream Casacade for G8M Dicktator?

*Cream Cascade* is an cumshot expansion pack for the *Dicktator v3* genitalia. Most cumshots included in this package are rigged and can be posed.

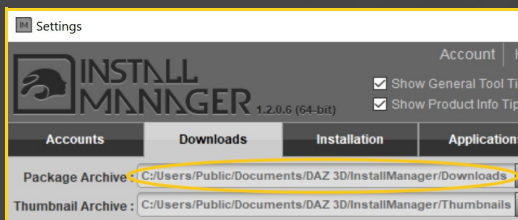
### REQUIREMENTS:

The set works with *Dicktator v3* genitalia only. It doesn't work with the Futalicious genitalia.

## 2 - How to install it? [two possibilities]

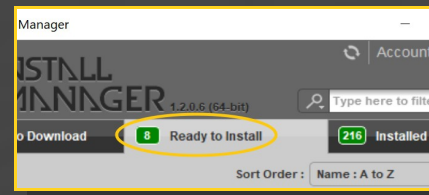
### A - Using DAZ Installation Manager

– Locate your DIM zip directory: Open DIM, click on the upper right gear, click on the 'Downloads' tab, and locate the Package Archive directory:



– Copy in it both the zip (do not unzip it) and the dsx files;

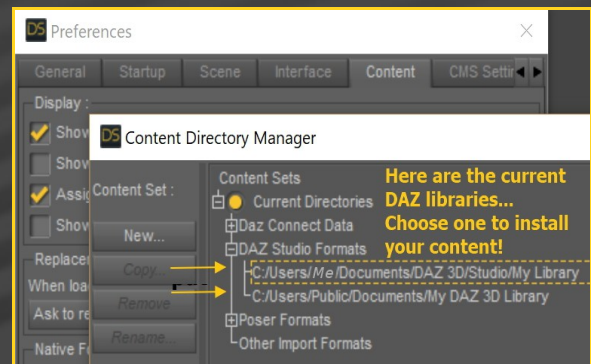
– Refresh DIM (couple of round arrows at the top), and enable the 'Ready to Install' tab. Locate the product, and click 'Install'... done!



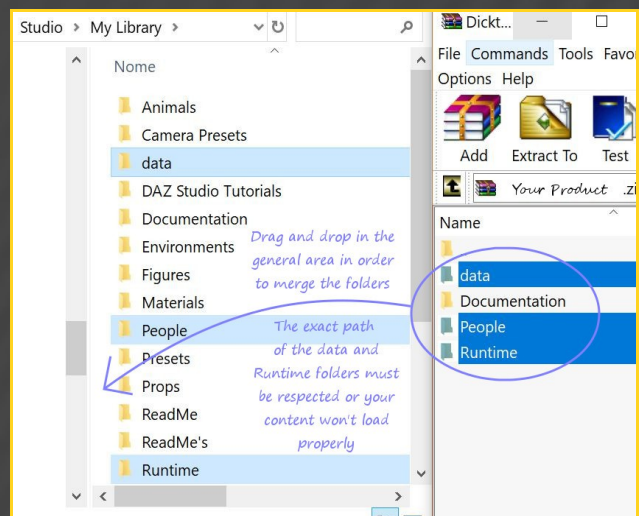
Remember that in the DIM settings, you can choose the destination library.

### B – Manual procedure

For Windows users:



Locate your main DAZ folder. It may be something like C:\Users\Public\Documents\My DAZ 3D Library.



Merge the contents of the .zip file with your main DAZ folder, where your G8M content is installed.

--> It is important that the **data** and **Runtime** folders are properly installed in your content library folder with the exact path provided in the zip (installing in a sub-folder is a common mistake), otherwise textures won't be found.

**For MAC users:** (instructions courtesy of Guttersnipe):

1. Locate your "My Library" folder and COPY the unarchived contents of your product by dragging and dropping while holding down the "alt" button.

2. A dialogue will appear.

DO NOT PRESS RETURN OR CLICK ON "REPLACE"

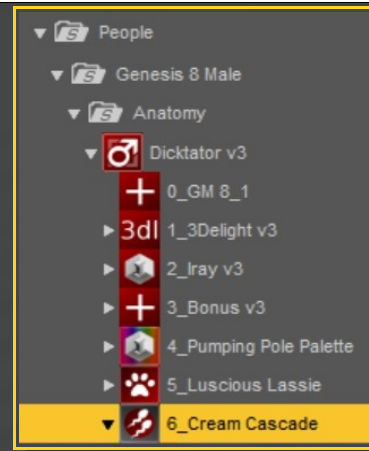
This is very, very important – if you do it will delete everything you have in any matching folders.

Instead click on "Apply to All" and then (carefully) click on "MERGE":

You may need to refresh your content library (alt-click on "My Library" and select "refresh" from the context menu) or restart Daz to see your new items.

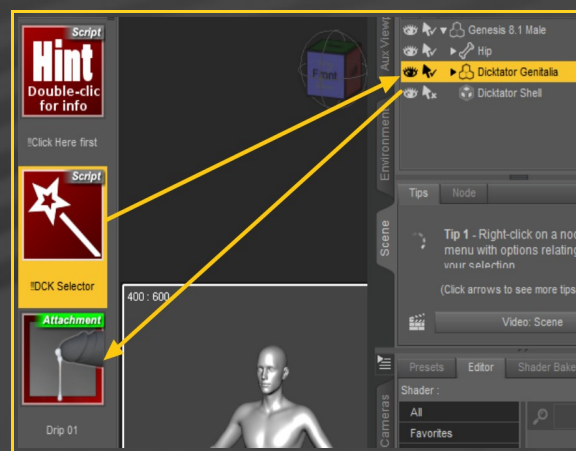
### 3 - Where is my content?

You can access to the cumshot in your Content Library tab under **People/Genesis 8 Male/Anatomy/Dicktator v3/6\_Cream Cascade**

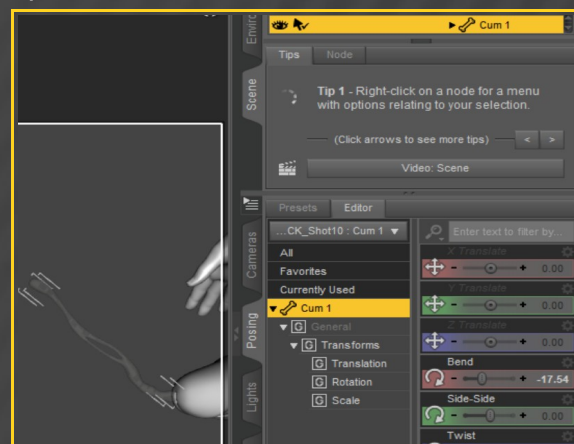


### 4 – Setup

Check Dicktator is selected in the scene and load any cumshot on it:



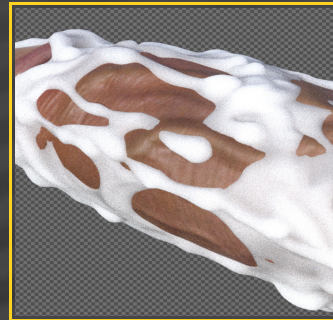
You can select the cumshot in the scene and pose it:



With the cumshot selected in the scene, you can access to posing/shaping parameters in the Parameters Tab:

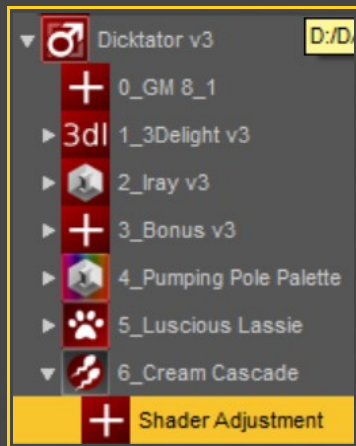


2 - Cum dripping around the shaft may present clipping issues with the shell veins displacement:



## 5 - Fixes

1 - You can adjust the cumshot opacity, for example if you have a very bright scene. Just select the cumshot and load a SSS preset on it:



In order to fix the problem, just load the "Copy Displacement to Cum" script on Dicktator: