

LOKI'S VENDOR HELPER COMIC BOOK EDITION



JANUARY 2014

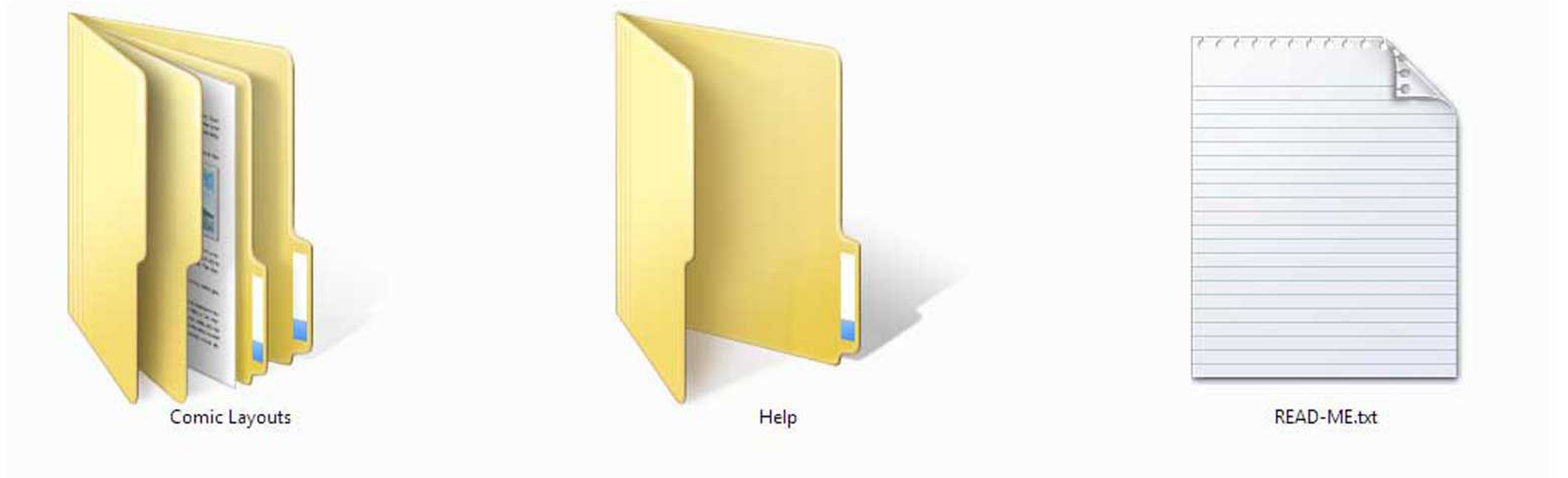
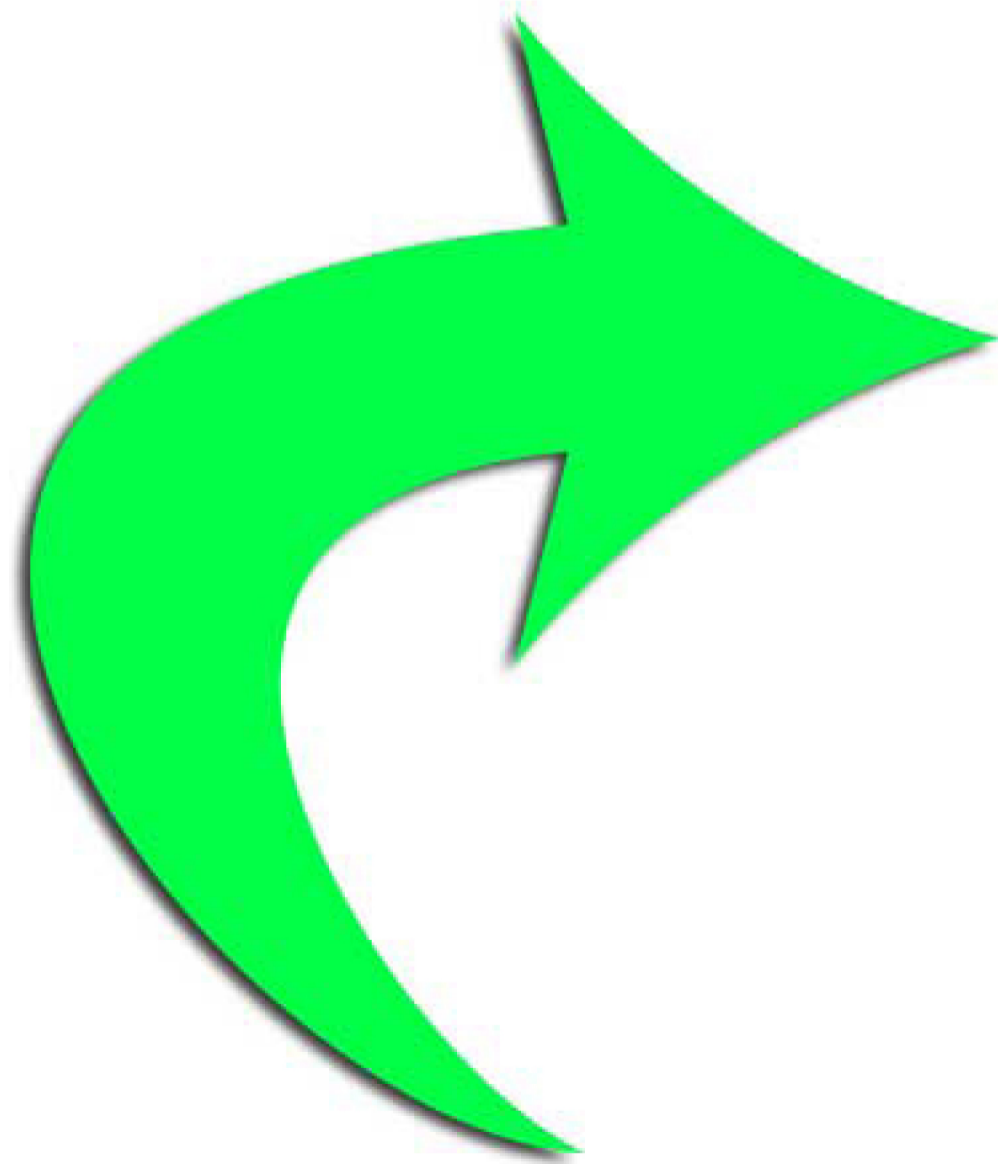
HOW TO

40

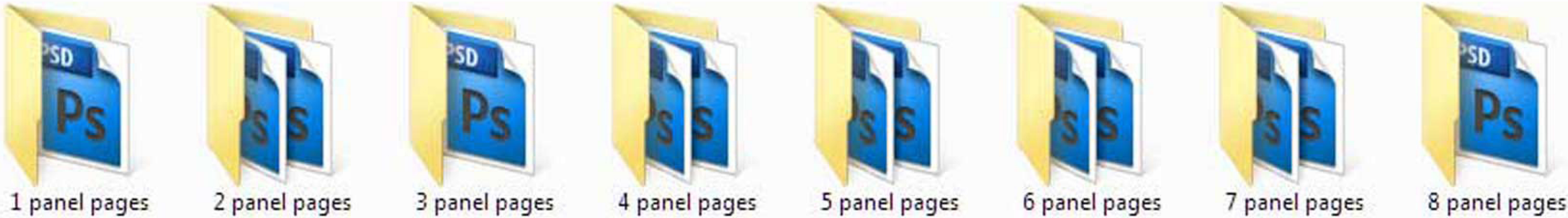
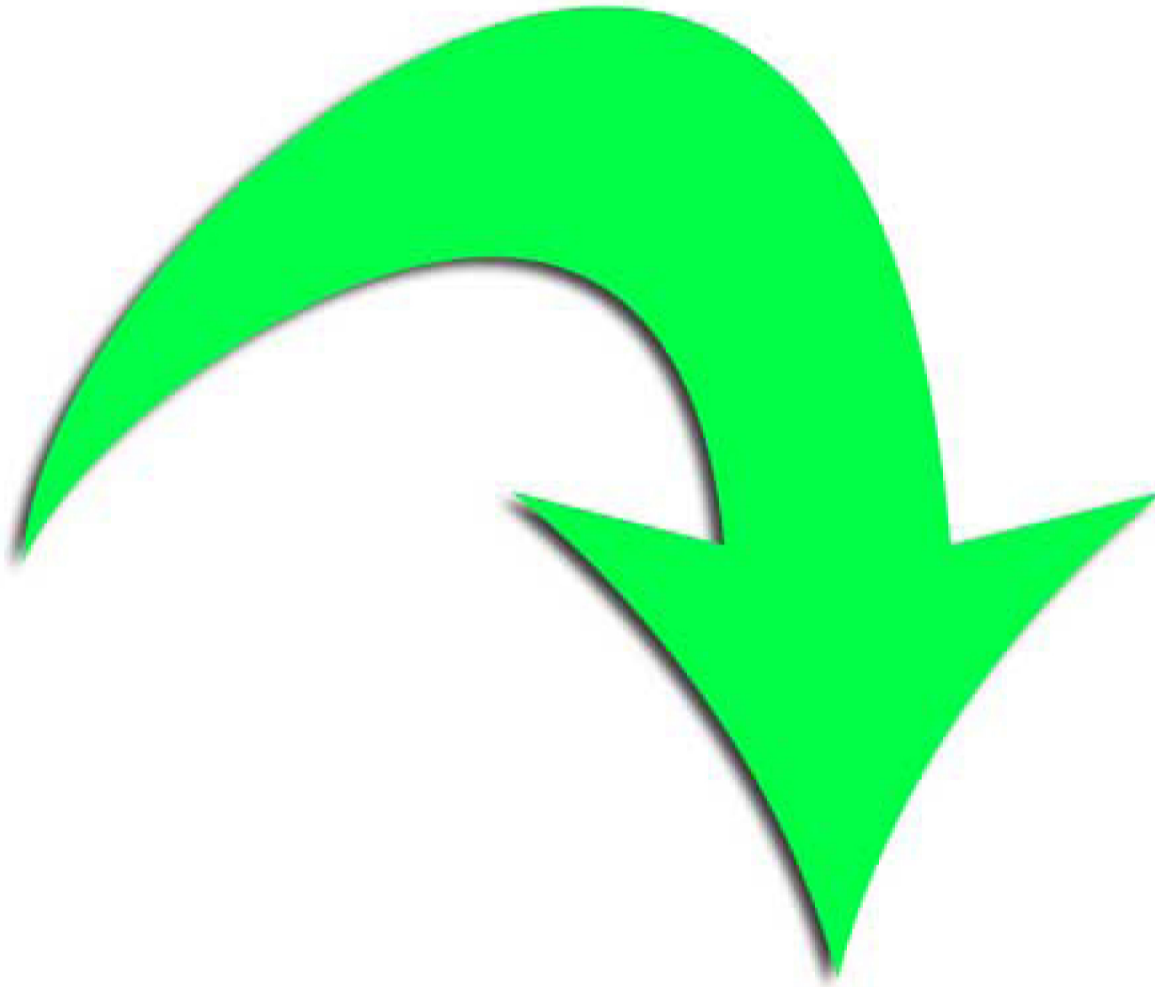
.PSD PAGE TEMPLATES

Thanks for purchasing Loki's "Vendor Helper Comic book Panel Templates (Traditional Edition)
In this Tutorial you will learn step by step how to add your images into the templates.

First, Unzip your download onto your computer and you will see the following folders and files
(or something similar) OPEN THE "COMIC LAYOUTS" Folder



Inside you will see a number of different folders marked with the number of panels. For this walkthrough we will be using the "4 panel pages" folder shown below. Open that folder to continue



To follow this walkthrough locate 4-panel-vert5.psd and open it in Photoshop either by double clicking it, right clicking and selecting 'open with photoshop' or by dragging the file into an already running Photoshop



4-panel-vert.psd



4-panel-vert2.psd



4-panel-vert3.psd



4-panel-vert4.psd



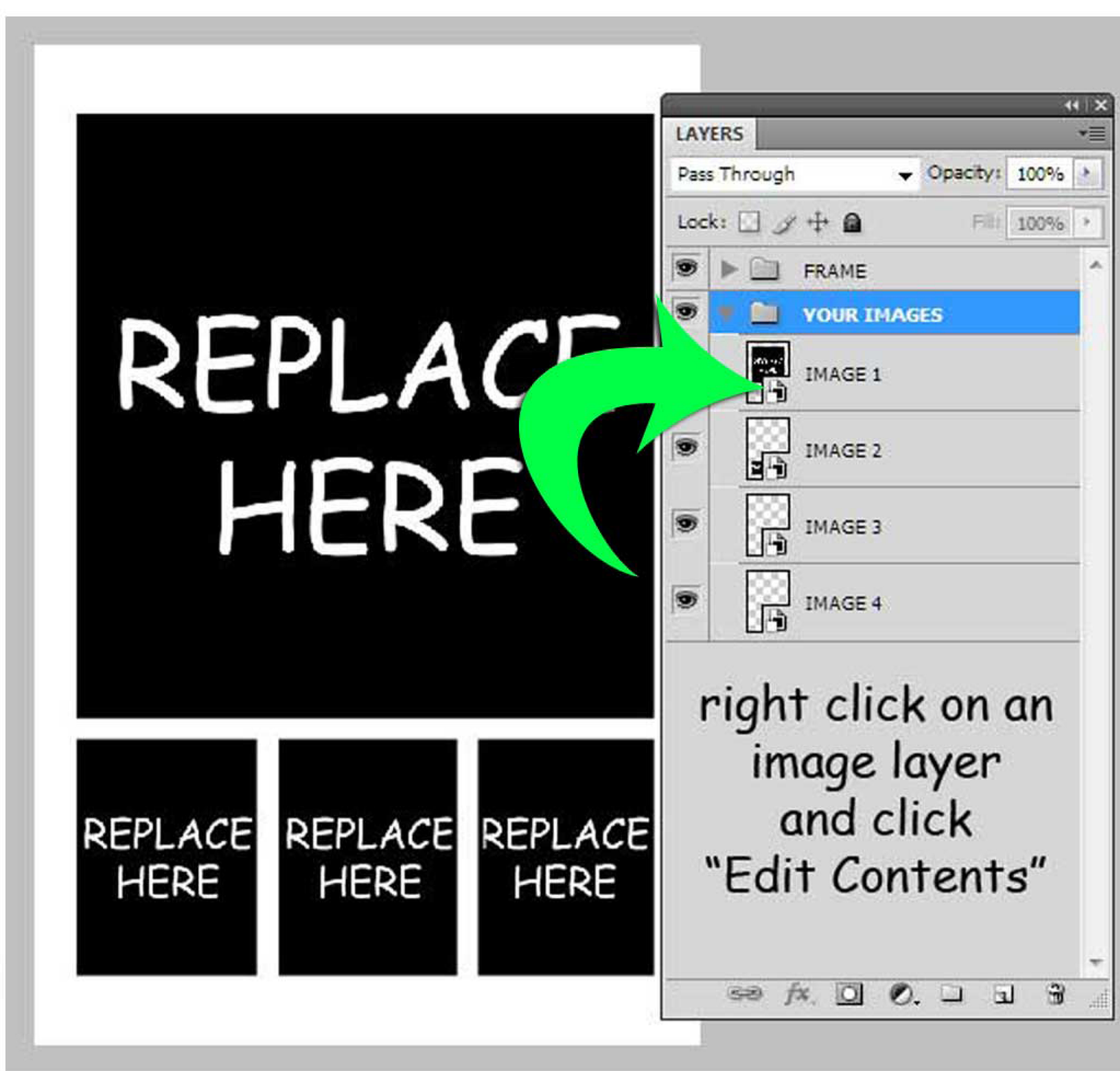
4-panel-vert5.psd




4-panel-vert6.psd

Once the file is open it should look like this as long as you selected the right file to open. Locate your "LAYERS" window and click on the down arrow on the "YOUR IMAGES FOLDER" All these layers are "Smart Objects" and can be edited simply by RIGHT CLICKING on the layer and selecting "EDIT CONTENTS"

Do this for the "IMAGE 1" Layer



Now you should have a new tab opened with the image shown to the left here.
This is your editable image layer.

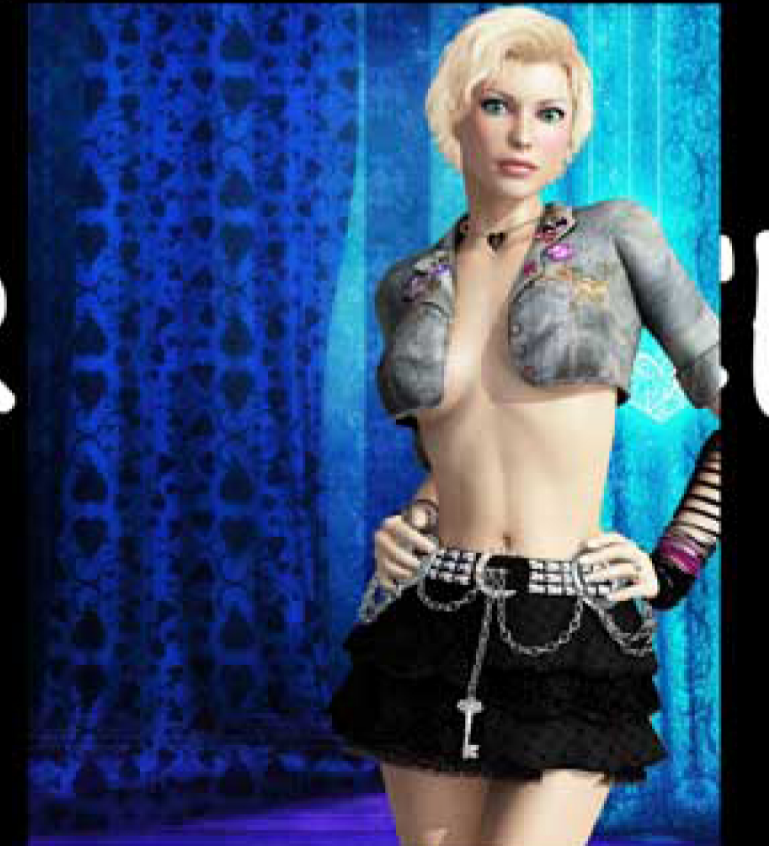
Simply drag your desired image into this image tab and resize as needed, once you have FULLY covered up the placeholder graphic you may either turn off the placeholder layer by clicking on the  button OR by just deleting the placeholder layer.

When you are satisfied simply click on FILE / SAVE Located at the top left of your Photoshop Screen.

Then you may close this image tab to return to your panel template page.

REPLACE
HERE

paste your desired image into the image, resize if needed to fit...



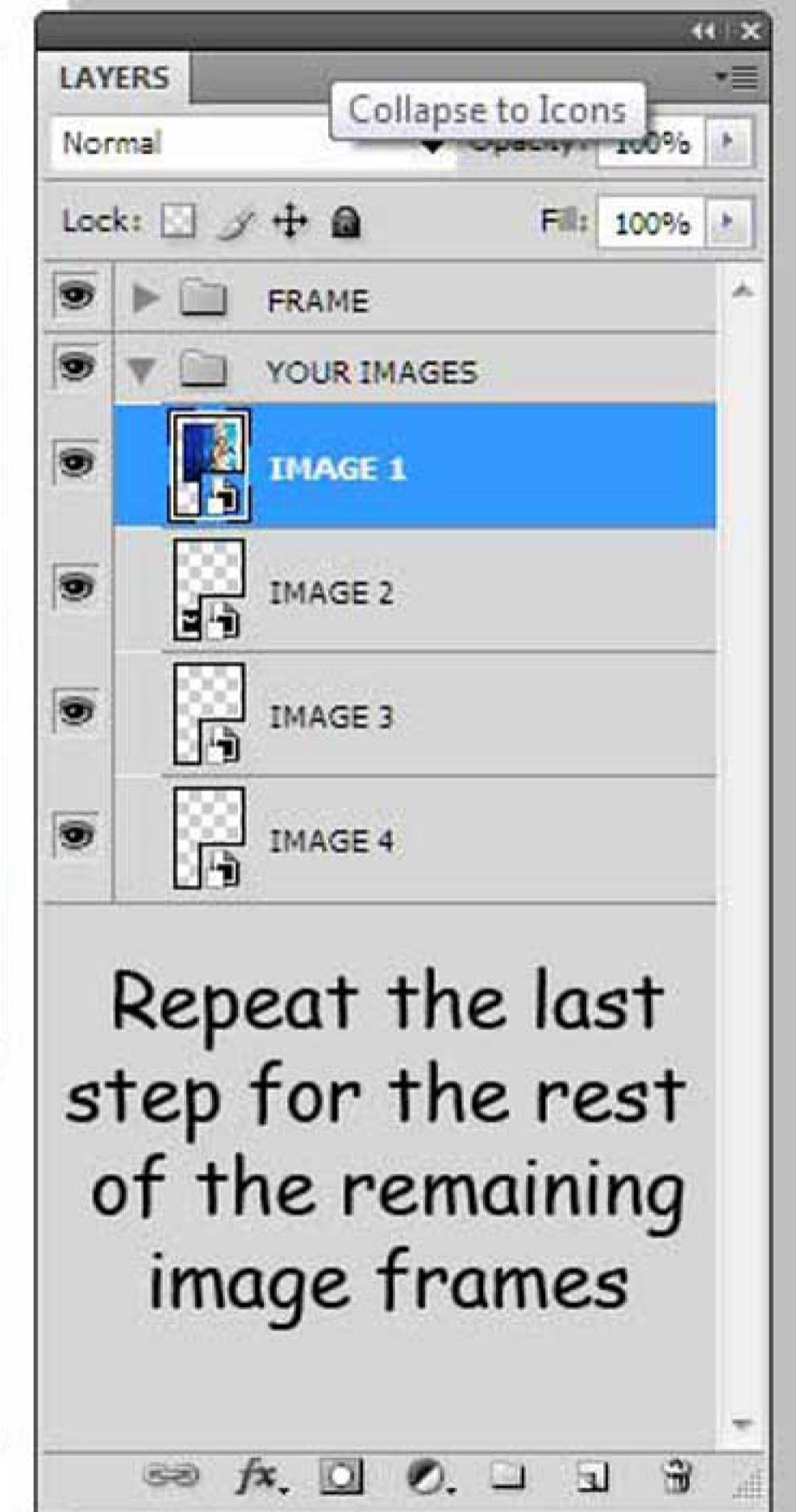
Then click FILE / SAVE and then close the image

Once back at the panel template you SHOULD see your desired image taking up ALL of the frame.

IF NOT: Simply repete the last step to adjust the size of your image inside the frame.

When you are happy with the results, move to the next layer and once again RIGHT CLICK / EDIT CONTENTS.

Do this for ALL remaining Image Placeholders.



Repeat the last step for the rest of the remaining image frames

When you have finished editing all of the Image Placeholders your Template is ready to be saved.

To do this simply click on FILE / SAVE AS

(or whatever way you normally save images)
and name your image the proper page number.

you may also add cosmetic tweaks to the page before that such as page number, arrows, or even tweaks to the frame itself.

