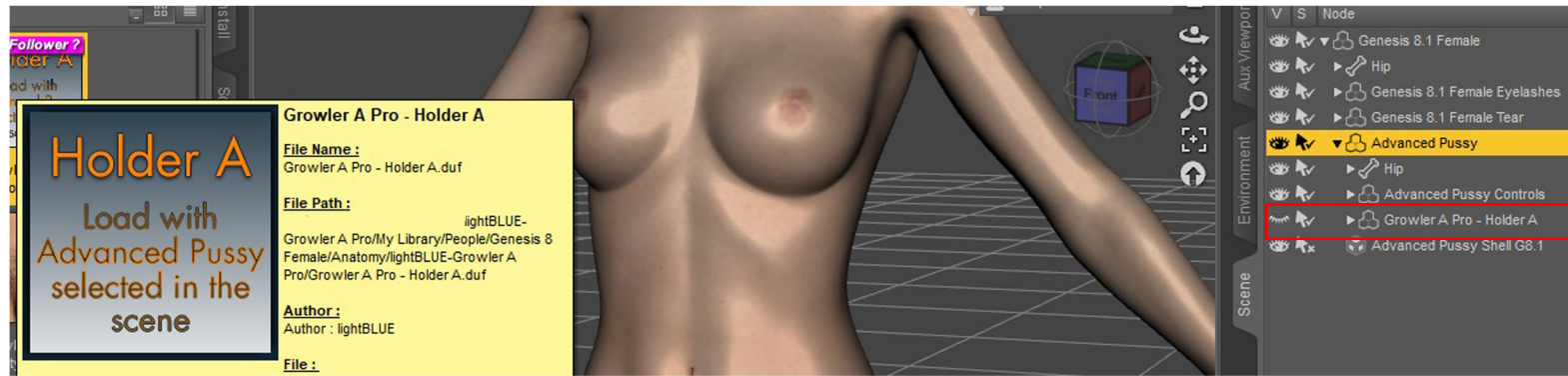


# INSTRUCTIONS

1. First load the "Holder A" with Advanced Pussy selected in the scene. It should automatically fit to the Advanced Pussy.

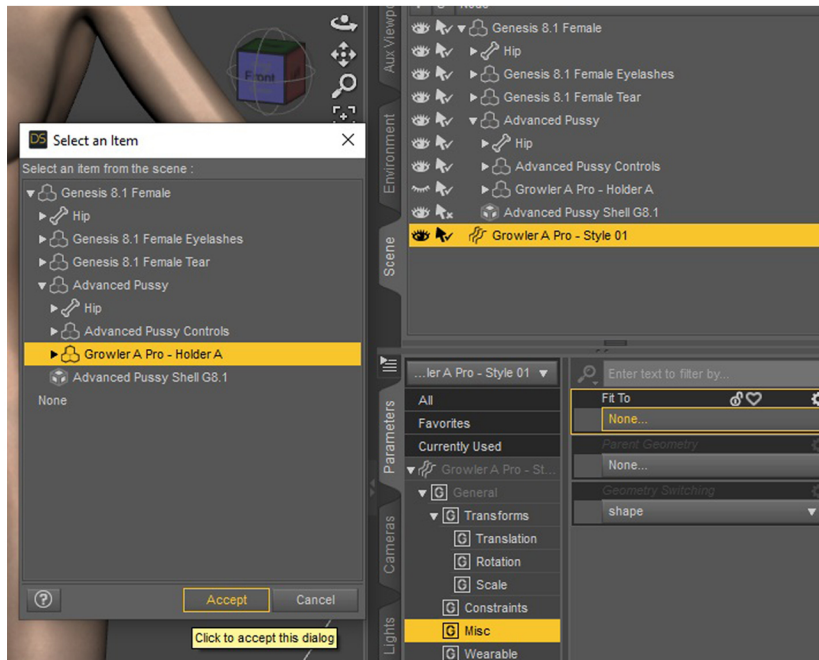


2. Loading the hair props - AUTOLOADING or MANUAL

**AUTOLOADING** - Select "Holder A" in the scene and then double-click on one of the AutoLoad & Fit scripts to load both hair props of that set. Hair props will be fitted automatically to the holder.



**MANUAL LOADING** - Load the hair prop of your choice and with the hair prop selected go to Parameters/General/Misc and under Fit To chose "Holder A", this will allow the hair to follow the figure.



If the figure is not a default Genesis or if it is not in the default pose, the hair might not be in the proper position when you load it, in that case, go to the Parameters/General/Transforms and toggle on/off the Apply Transformation option. Parenting is NOT needed and may cause undesired behaviour!

See next page for more info

— If you encounter any issues feel free to write to [lightblue3design@gmail.com](mailto:lightblue3design@gmail.com) —

# INSTRUCTIONS

3. In order to load materials hair prop should be selected in "scene" pane.  
The hair color will be visible in renders although it is appearing black in viewport.

NOTE - This package has 15 basic sets. Each basic set consists of 2 hair props, which gives you 30 props to mix as you like.

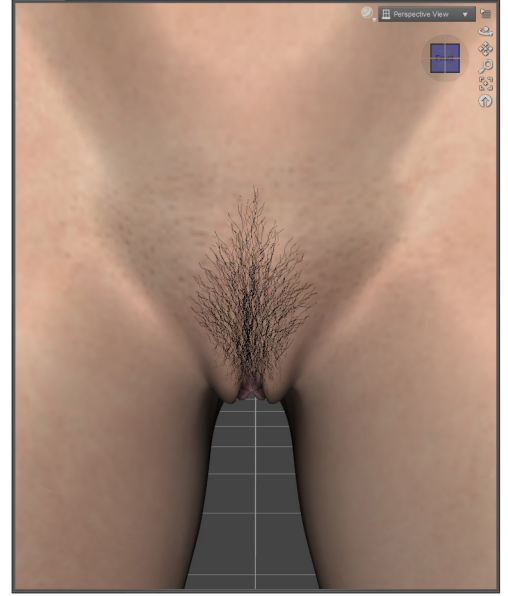
These hair props allow you to create many different, naturally layered styles.

You can load any number of props to get the desired look.



Style 01

+



Style 01 Center

=



Set 01 Full