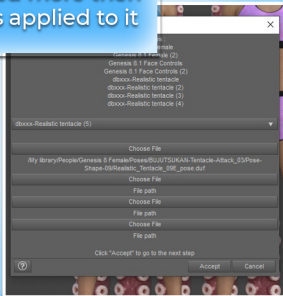
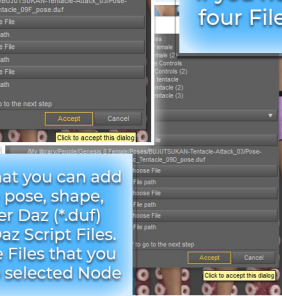
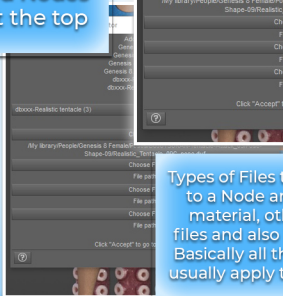
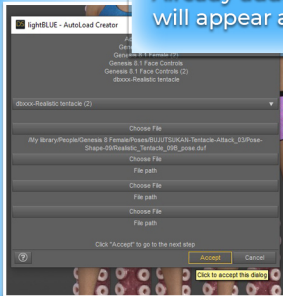
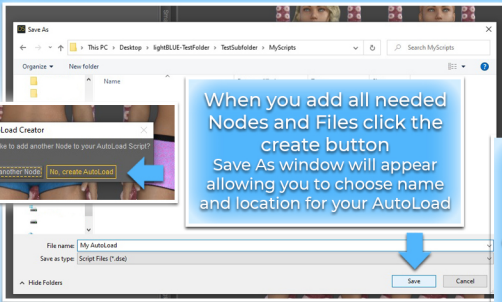


Add as many Nodes
as you like
Already added Nodes
will appear at the top

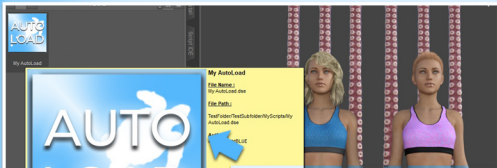
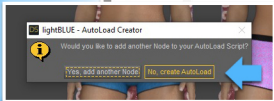
You can add the same
Node multiple times
if you need more than
four Files applied to it



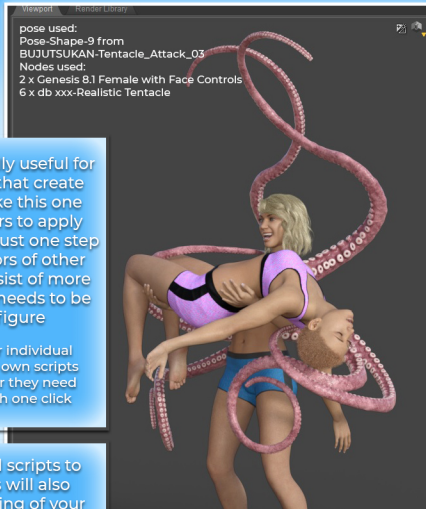
Types of Files that you can add
to a Node are pose, shape,
material, other Daz (*.duf)
files and also Daz Script Files.
Basically all the Files that you
usually apply to selected Node



When you add all needed Nodes and Files click the create button
Save As window will appear allowing you to choose name and location for your AutoLoad



Now you have your AutoLoad Script and with one click you can apply all chosen Files to all chosen Nodes



This tool is especially useful for content creators that create complex poses like this one to allow their users to apply complete poses in just one step but also for creators of other products that consist of more than one file that needs to be applied to a figure

It is also suitable for individual users to create their own scripts for loading whatever they need on their figures with one click

Adding AutoLoad scripts to your pose packs will also allow quicker testing of your product, a pose like this will be loaded and tested with one click instead of ten or more

NOTE : You may include AutoLoad Scripts that you create in your Commercial Products but AutoLoad Creator itself with all the code used is subject to Copyright (c) with all rights reserved and is Not intended for redistribution