

EASY RIDER GENITALIA FOR CENTAUR 7 MALE (G3M CENTAUR)

~~Tutorial~~

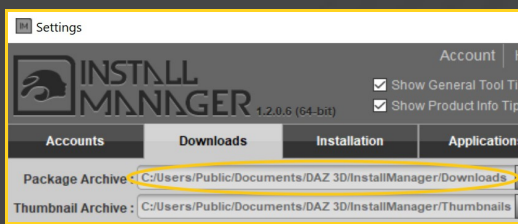
1 - What is Easy Rider v2?

Easy Rider for Genesis 3 Male Centaur is a horse genitalia set for Centaur 7, including vagina, anus and penis. Genitalias come as three separate grafts that can be mixed and customized with many morphs and texture options (applied on a geometry shell to blend with any horse texture).

2 - How to install it? [two possibilities]

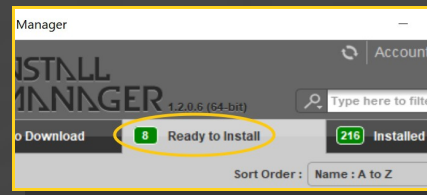
A - Using DAZ Installation Manager

– Locate your DIM zip directory: Open DIM, click on the upper right gear, click on the 'Downloads' tab, and locate the Package Archive directory:



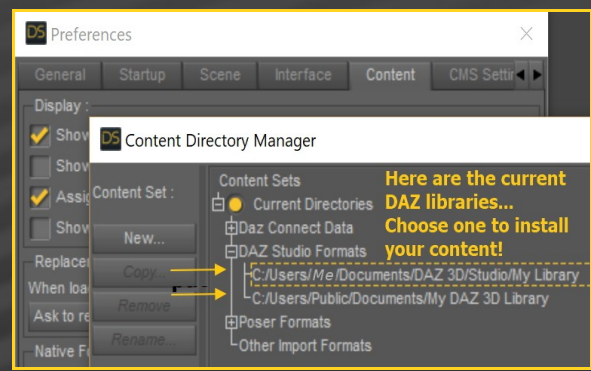
– Copy in it both the zip (do not unzip it) and the dsx files;

– Refresh DIM (couple of round arrows at the top), and enable the 'Ready to Install' tab. Locate the product, and click 'Install'... done!

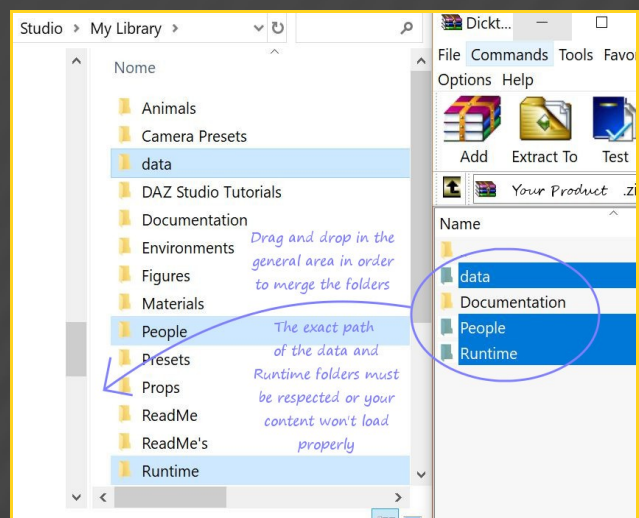


Remember that in the DIM settings, you can choose the destination library.

B – Manual procedure



Locate your main DAZ folder. It may be something like C:\Users\Public\Documents\My DAZ 3D Library.



Merge the contents of the .zip file with your main DAZ folder, where your content is installed. For MAC users: follow instructions here:

<http://www.renderotica.com/community/forums.aspx?g=posts&t=204659&cmsg=0&cmsn=>

--> It is important that the **data** and **Runtime** folders are properly installed in your content library folder with the exact path provided in the zip (installing in a sub-folder is a common mistake), otherwise textures won't be found.

3 - Where is my content?

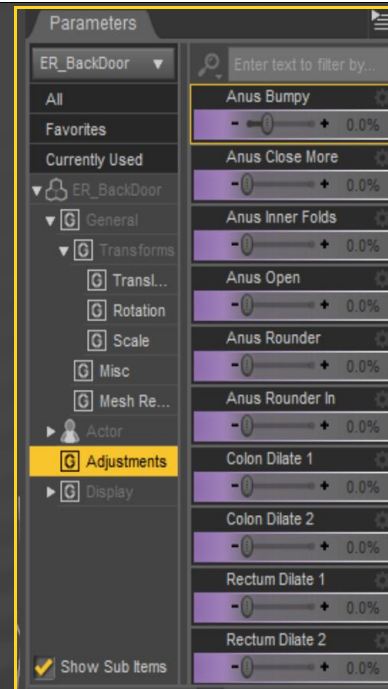
After loading **Genesis 3 Male Centaur** into your scene, you can access to all the grafts and mats in your Content Library tab:

My Library\People\Genesis 3 Male\

Characters\Centaur\Easy Rider Genitalia v2



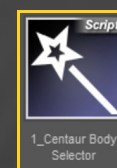
All the grafts are rigged and can be posed, while the morphs can be manually tweaked in the Parameters Tab.



The grafts include support for the default Horse 2 FBM: Arabian, Donkey, Draft Horse, Emaciated Horse, Mule, Mustang, Shetland, Thoroughbred.

4 - How to set up Easy Rider for Centaur 7

Select '**Male Centaur Body**' in the Scene tab (graft of Genesis 3 male Centaur). You can use the 'Body Selector' script to quickly select it.



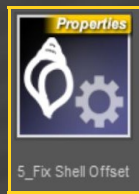
Load '**Easy Rider Mare**' (vagina and anus) and/or '**Easy Rider Back Door**' (stand-alone anus) and/or '**Easy Rider Shaft**';



After loading the graft, with any centaur node selected, run the '**Material Copy**' script.



Select '**Centaur Shell**' in the Scene tab (it can't be selected in the viewport), or use the 'Shell selector' script, and load '**Fix Shell Offset**' and a material preset on it.



If you want to add a cumshot to the shaft, select 'Easy Rider Shaft', and load 'Cumshot 01' or 'Cumshot 02'. The cumshots include shaping morphs as well.

5 – About the geometry shell

The texture is applied on a geometry shell, a copy of the figure geometry, with a slight offset. '**Fix Shell Offset**' will reduce the offset value of the shell provided by DAZ to 0.01. You can at any moment increase this value on the shell parameters.

The horse mat is copied on the grafts under the shell; it affects the translucency color and the blend on the edges of the gens.