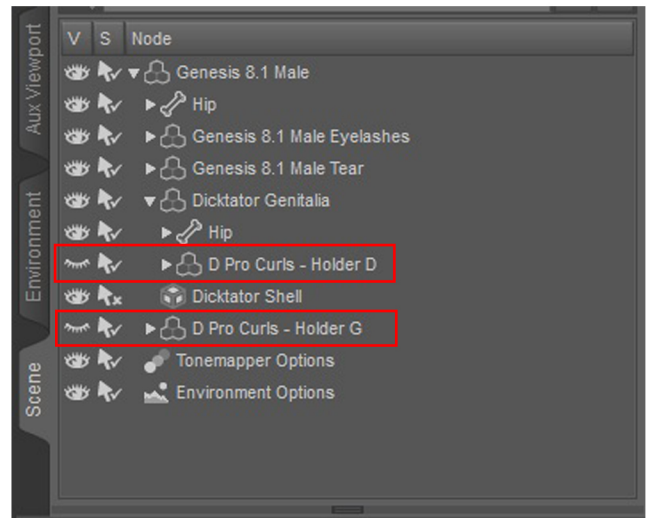
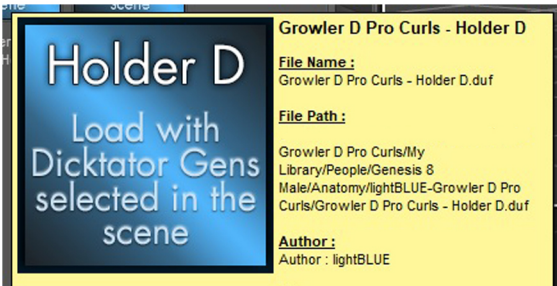
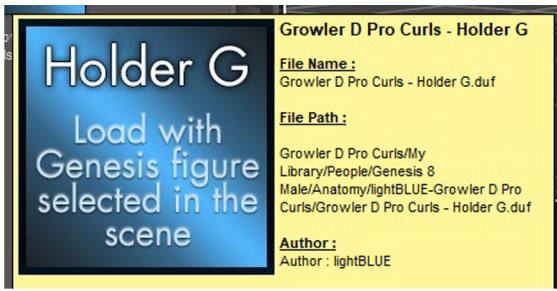


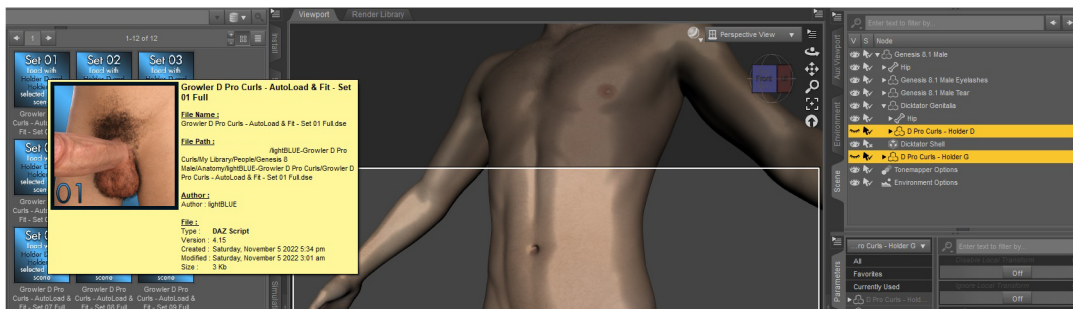
INSTRUCTIONS

1. First load the "Holder G" with G8M/G8.1M selected in the scene and/or "Holder D" with Dicktator Genitalia selected in the scene. Both should automatically fit to corresponding figure.

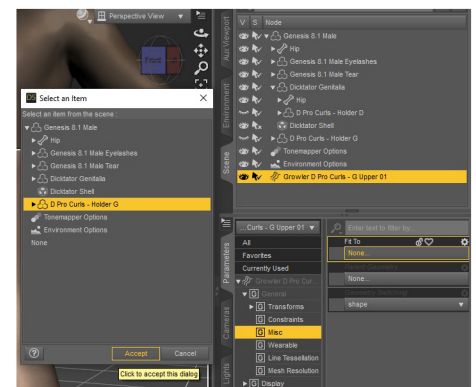
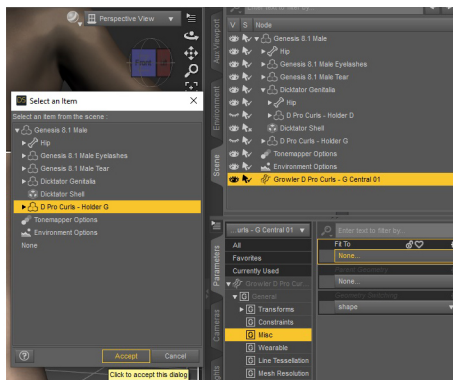
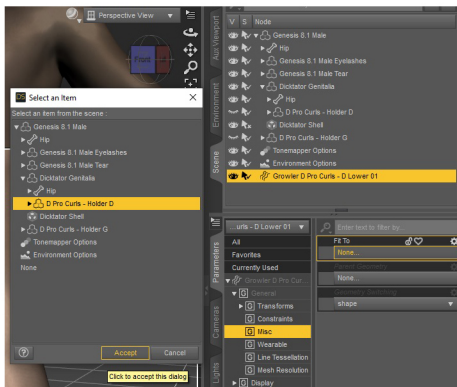


2. Loading the hair props - AUTOLOADING or MANUAL

AUTOLOADING - Select both "Holder D" and "Holder G" in the scene (hold "Ctrl" and click on both holders) and then double-click on one of the AutoLoad & Fit scripts to load all three hair props of that set. All three hair props will be fitted automatically to their corresponding holders.



MANUAL LOADING - Load the hair prop of your choice and with the hair prop selected go to Parameters/General/Misc and under Fit To chose "Holder D" for L (lower) styles or "Holder G" for U (upper) and C (central) styles, this will allow the hair to follow the figure.



If the figure is not a default Genesis or if it is not in the default pose, the hair might not be in the proper position when you load it, in that case, go to the Parameters/General/Transforms and toggle on/off the Apply Transformation option.

Parenting is NOT needed and may cause undesired behaviour!

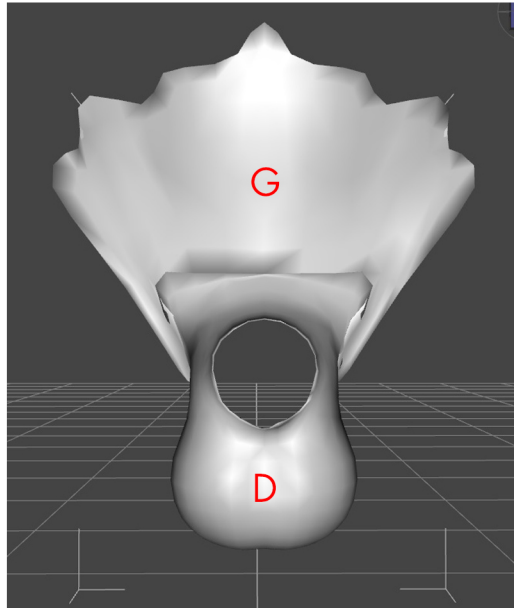
See next page for more info

— If you encounter any issues feel free to write to lightblue3design@gmail.com —

INSTRUCTIONS

3. In order to load materials hair prop should be selected in "scene" pane.
The hair color will be visible in renders although it is appearing black in viewport.

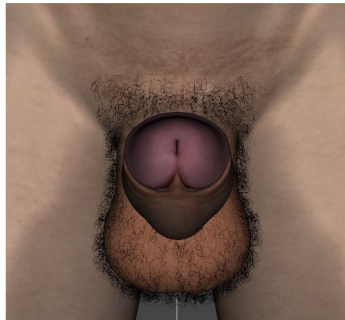
NOTE 1 - Two Hair holder props cover the area completely, but also assure that all of the Genesis and Dicktator morphs are followed correctly.



NOTE 2 - This package has 10 basic sets. Each basic set consists of 3 hair props, upper, lower and central, which gives you 30 props to mix as you like.
Separated hair props for upper, lower and central areas allow you to create many different, naturally layered styles. You can load any number of props to any of the three areas to get the desired look.



Upper 01



Lower 01



Central 01



Set 01 Full

— If you encounter any issues feel free to write to lightblue3design@gmail.com —