

LOKI'S
VENDOR HELPER
COMIC BOOK EDITION

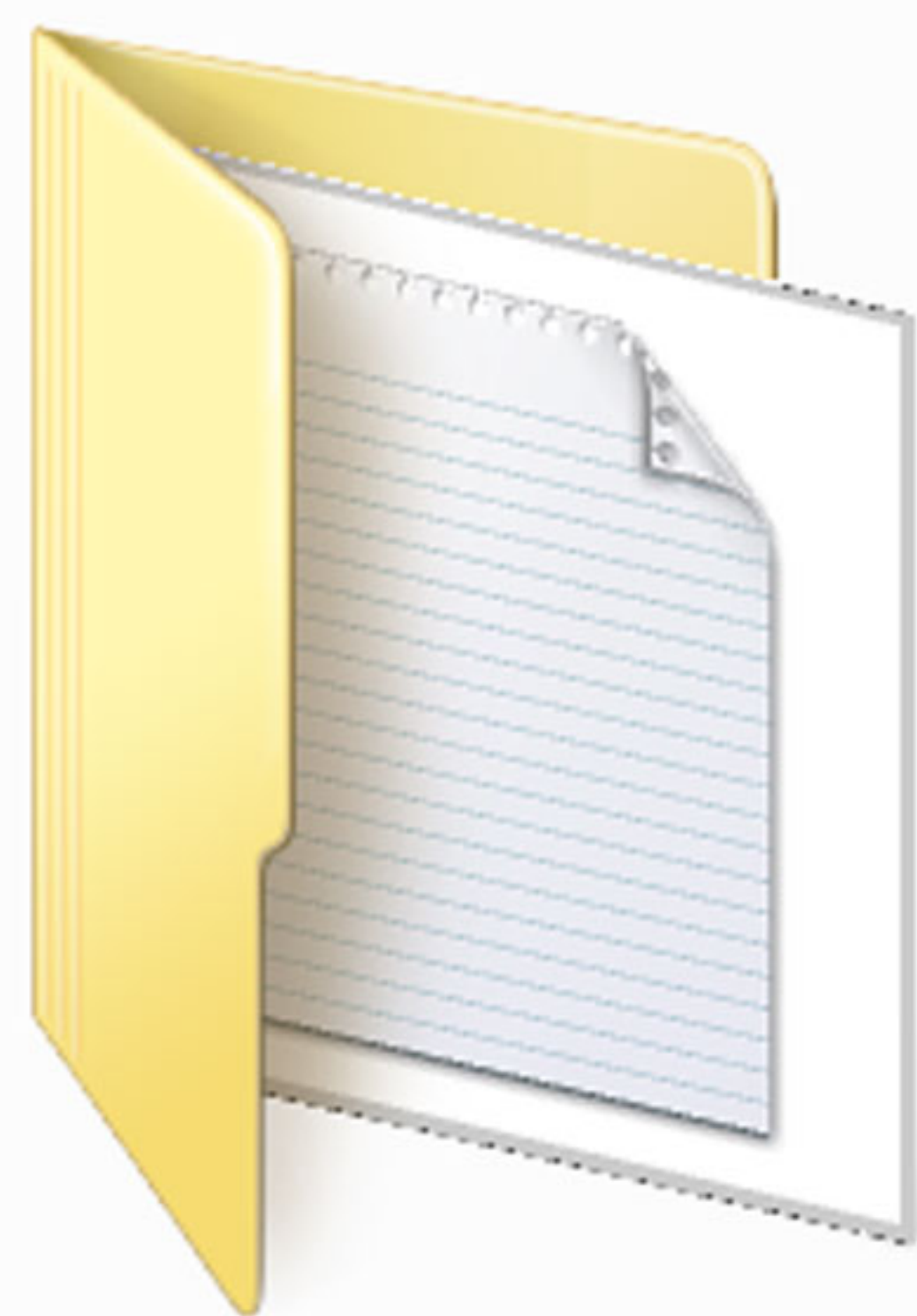


COMIC SOUND EFFECTS

HOW-TO MANUAL

**THANKS FOR PURCHASING LOKI'S "VENDOR HELPER COMICBOOK SOUND EFFECTS VOLUME #1"
IN THIS TUTORIAL YOU WILL LEARN STEP BY STEP HOW TO USE THE SOUND EFFECTS,
HOW TO EDIT THEM, AND HOW TO EXTRACT THE STYLES USED IN THE INCLUDED FILES.**

**FIRST UNZIP YOUR DOWNLOAD ONTO YOUR COMPUTER AND YOU WILL SEE THE FOLLOWING
FOLDERS AND FILES (OR SOMETHING SIMILAR) OPEN THE "PSD" FOLDER.**



HELP



PSD

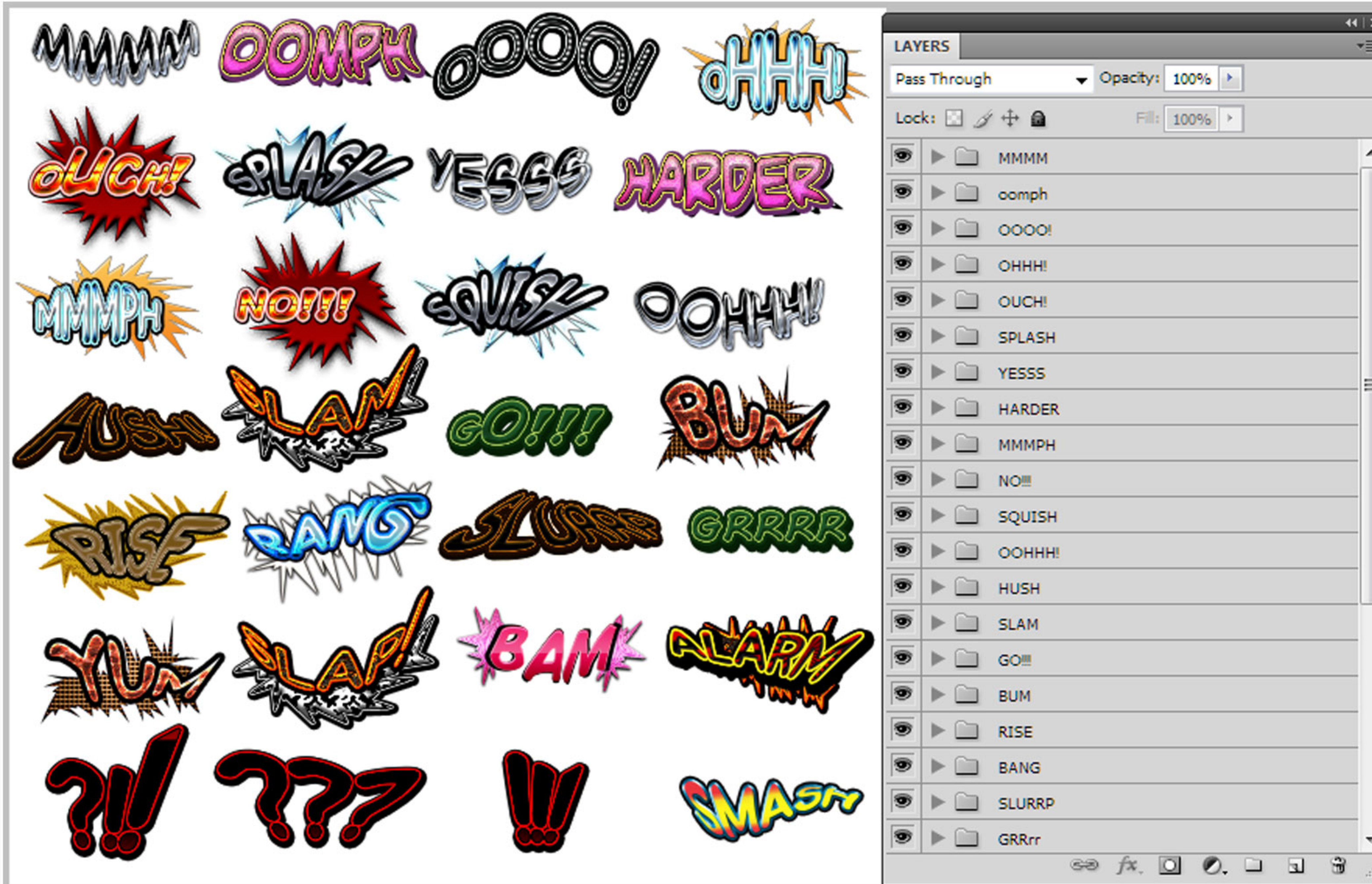


OPEN HELP FOLDER.txt

AS YOU ARE OPENING THE FILE IF YOU GET A PROMPT ABOUT UPDATING FONTS JUST CLICK "NO" AND ALLOW THE FILE TO LOAD, ONCE LOADED LOCATE YOUR LAYERS WINDOW AS SHOWN BELOW, EACH SOUND EFFECT HAS IT'S OWN EDITABLE FOLDER..

1ST WE WILL FOCUS ON SAVING THE STYLES USED IN THESE EFFECTS...

OPEN THE "MMMM" FOLDER AND DOUBLE CLICK ON THE FIRST TEXT LAYER TO LAUNCH THE EFFECTS WINDOW OF PHOTOSHOP.



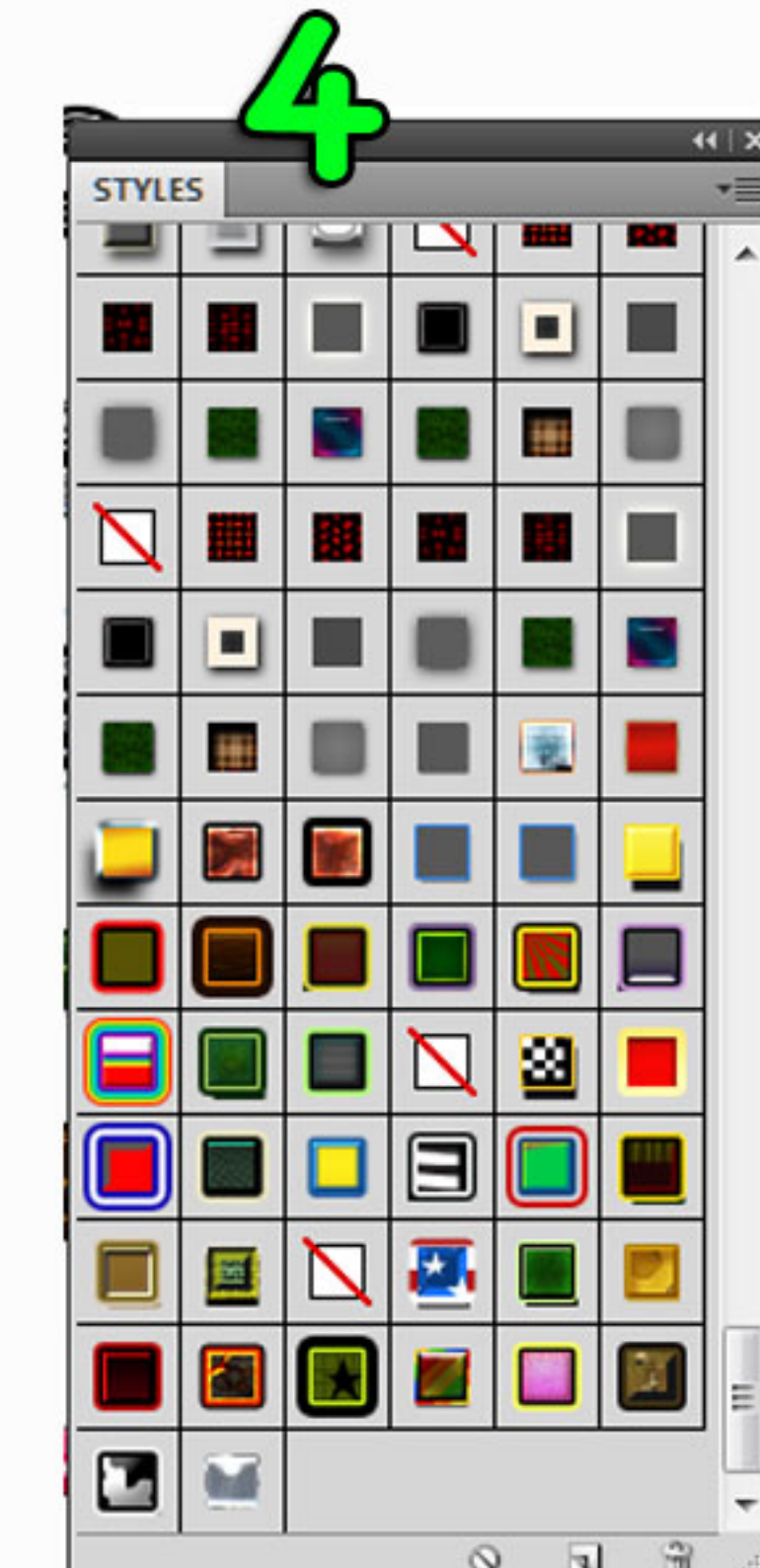
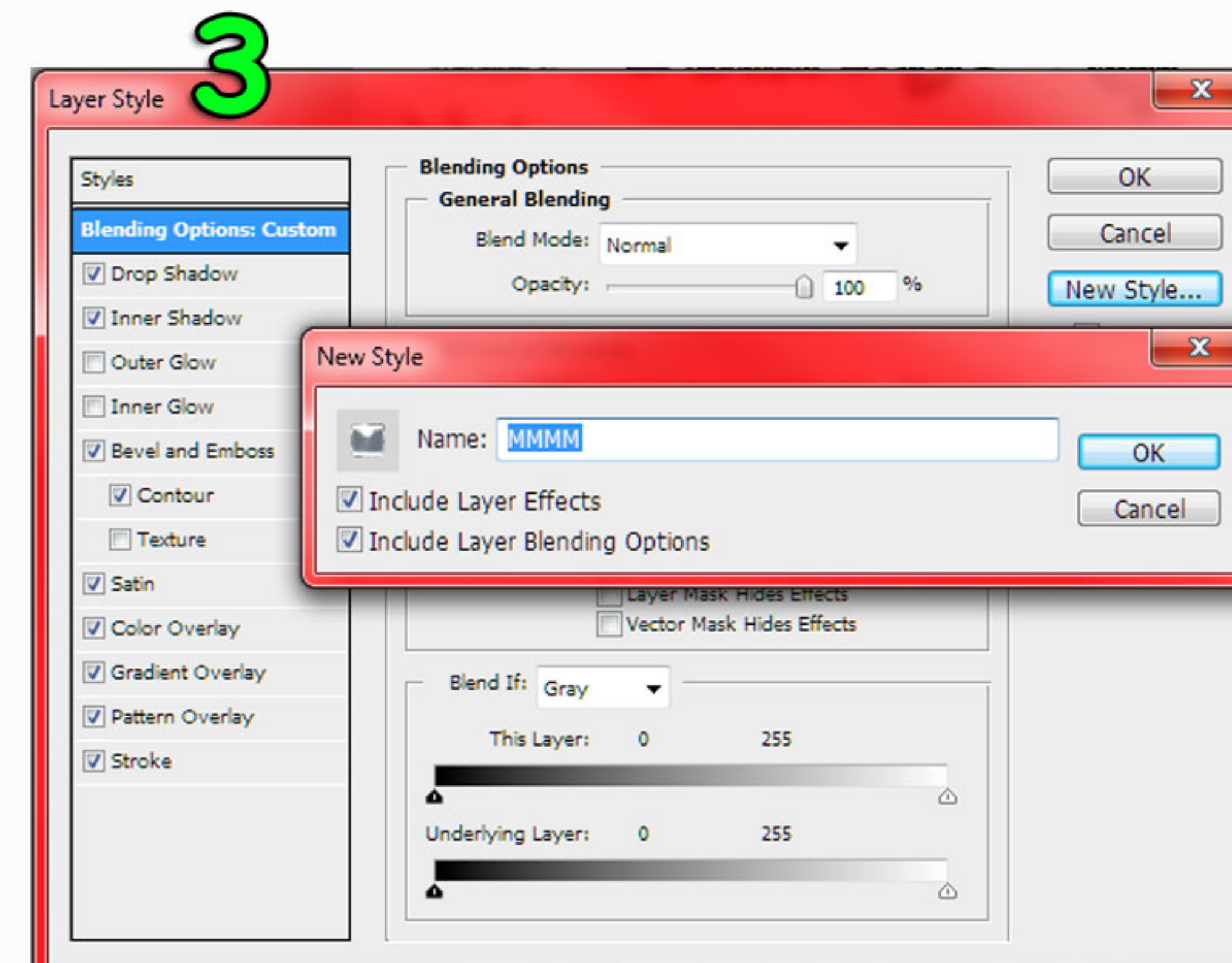
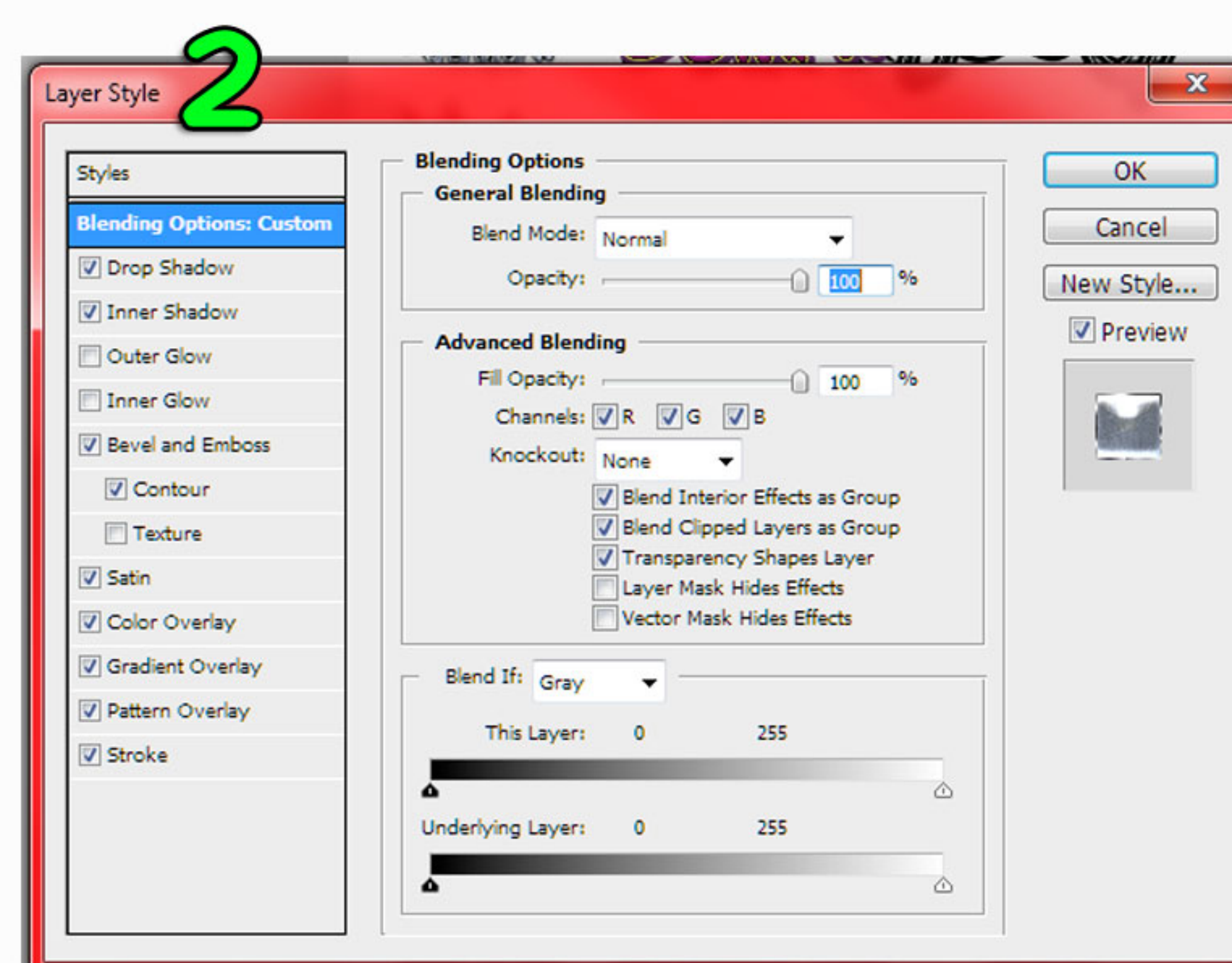
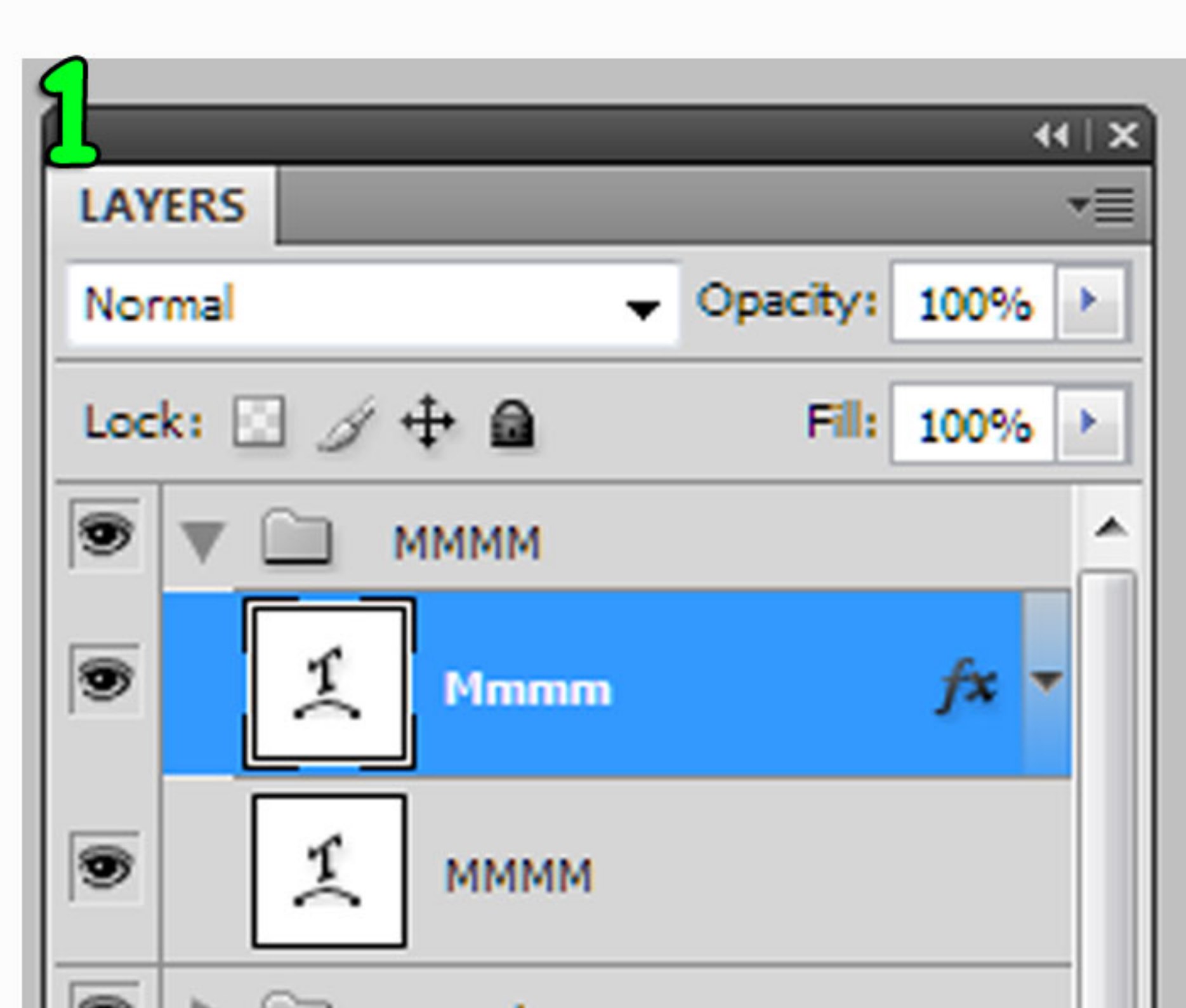
1: DOUBLE CLICKING ON THE FIRST “MMMM” TEXT LAYER OPENS THE LAYER STYLE WINDOW

2: FORM THE LAYER STYLE WINDOW CLICK ON “NEW STYLE”

3: NAME THE NEW STYLE ‘MMMM’ OR WHATEVER YOU WANT TO CALL IT. THEN CLICK OK

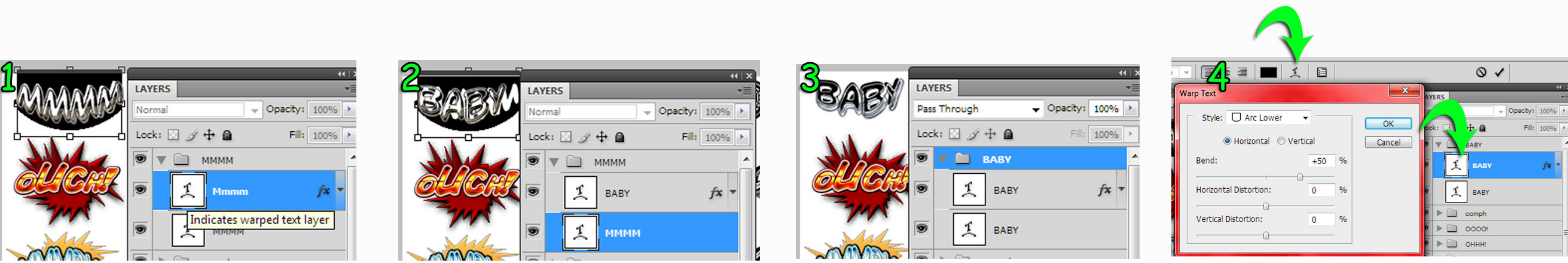
4: YOUR NEW STYLE WILL APPEAR IN THE LAST SPOT OF YOUR ‘STYLES’ WINDOW
YOU CAN REPEAT STEPS 1-3 FOR EVERY DIFFERENT STYLE IN THE 3 INCLUDED PSD FILES
OR JUST THE ONE YOU LIKE THE MOST.

NEXT WE WILL FOCUS ON EDITING THE SOUND EFFECTS.



- 1: DOUBLE CLICK ON THE FIRST “MMMM” TEXT LAYER AND TYPE YOUR NEW TEXT
- 2: DOUBLE CLICK ON THE 2ND “MMMM” TEXT LAYER AND TYPE THE SAME TEXT AGAIN
- 3: DOUBLE CLICK ON THE FOLDER AND RENAME IT TO MATCH YOUR NEW TEXT.
- 4: IF YOU NEED TO ADJUST THE NEW TEXT’S STYLE SIMPLY DOUBLE CLICK ON THE FIRST TEXT AND IF YOU SEE THE SAME ARC UNDER THE “T” AS SHOWN IN #4 THEN CLICK THE “T” ICON ON THE TOP BAR AND MAKE YOUR ADJUSTMENTS AS SHOWN IN #4.

NEXT WE WILL FOCUS ON USING THE SOUND EFFECTS IN YOUR IMAGES



- 1: MAKE SURE YOU HAVE AN IMAGE YOU WANT TO HAVE A SOUND EFFECT ADDED TO.
- 2: UNDOCK THE SOUND EFFECT PSD FILE BY DRAGGING IT'S TAB INTO YOUR LOWER SCREEN.
- 3: SELECT THE FOLDER FOR THE EFFECT YOU WANT TO USE AND DRAG IT ONTO THE IMAGE YOU WANT TO ADD IT TO
- 4: ONCE DRUG OVER IF YOU NEED TO RESIZE THE SOUND EFFECT, SIMPLY CLICK ON THE FOLDER ICON, THEN AT THE TOP OF YOUR SCREEN CLICK "IMAGE / FREE TRANSFORM" AND RESIZE AS NEEDED
- 5: IF YOU RUN INTO STYLE ISSUES SIMPLY RIGHT CLICK EACH OF THE TEXT FILES IN THE SOUND EFFECT FOLDER AND SELECT "RASTERIZE TEXT" BEFORE YOU RESIZE IT TO FIT YOUR IMAGE.



THAT'S IT! IF YOU HAVE ANY QUESTIONS, PROBLEMS OR JUST NEED A HAND, FEEL FREE TO SEND ME AN EMAIL TO: 3DLOKI@GMAIL.COM AND I'LL GET BACK TO YOU AS SOON AS I CAN BETWEEN MONDAYS - FRIDAYS.

YOU CAN ALSO MESSAGE ME ON RENDEROTICA UNDER THE NAME "LOKI"

IF YOU HAVE IDEAS FOR MORE SOUND EFFECTS PLEASE LET ME KNOW AS WELL!

A stylized sound effect graphic for "OUCH!". The word is written in a bold, italicized, orange-to-yellow gradient font with a black outline. It is set against a red, starburst-shaped background with a halftone dot pattern.A stylized sound effect graphic for "SPLASH". The word is written in a bold, italicized, silver-to-blue gradient font with a black outline. It is set against a light blue, starburst-shaped background with a halftone dot pattern.A stylized sound effect graphic for "YESSSS". The word is written in a bold, italicized, silver-to-blue gradient font with a black outline. It is set against a light blue, starburst-shaped background with a halftone dot pattern.A stylized sound effect graphic for "HARDER". The word is written in a bold, italicized, purple-to-pink gradient font with a yellow outline. It is set against a light purple, starburst-shaped background with a halftone dot pattern.A stylized sound effect graphic for "MMMPH". The word is written in a bold, italicized, blue-to-silver gradient font with a black outline. It is set against a yellow-to-orange, starburst-shaped background with a halftone dot pattern.A stylized sound effect graphic for "NO!!!". The word is written in a bold, italicized, orange-to-yellow gradient font with a black outline. It is set against a red, starburst-shaped background with a halftone dot pattern.A stylized sound effect graphic for "SQUISH". The word is written in a bold, italicized, silver-to-blue gradient font with a black outline. It is set against a light blue, starburst-shaped background with a halftone dot pattern.A stylized sound effect graphic for "OOHHH!". The word is written in a bold, italicized, silver-to-blue gradient font with a black outline. It is set against a light blue, starburst-shaped background with a halftone dot pattern.