

LOKI'S  
VENDOR HELPER  
COMIC BOOK EDITION



APRIL 2014

# HOW TO

46

.PSD PAGE TEMPLATES

Thanks for purchasing Loki's "Vendor Helper Comic Book Panel Templates (Traditional Edition) Volume #2. In this tutorial you will learn step by step, how to add your images into the comic bok page templates.

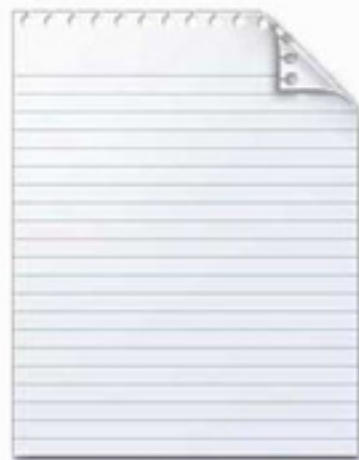
First, Unzip youe download onto your computer and you will see the following folders & files (or something similar) **OPEN THE "46 COMIC LAYOUTS" folder.**



46 Comic  
Layouts



Help



READ-ME.txt

Inside you will see a number of zip files (this volume was multi-zipped to make your download as small as possible, as all the templates total over 300mb) Unzip each of the zip files. For this walkthrough we will be using the "4 panel pages" folder shown below, open it to continue.



1 panel  
pages.zip



2 panel  
pages.zip



3 panel  
pages.zip



4 panel  
pages.zip



5 panel  
pages.zip



6 panel  
pages.zip



7 panel  
pages.zip



8 panel  
pages.zip

To follow this walkthrough locate 4-panel-vert5.psd and open it in Photoshop either by double clicking it, right clicking and selecting 'open with photoshop' or by dragging the file into an already running Photoshop



4-panel-vert.psd



4-panel-vert2.psd



4-panel-vert3.psd



4-panel-vert4.psd



4-panel-vert5.psd

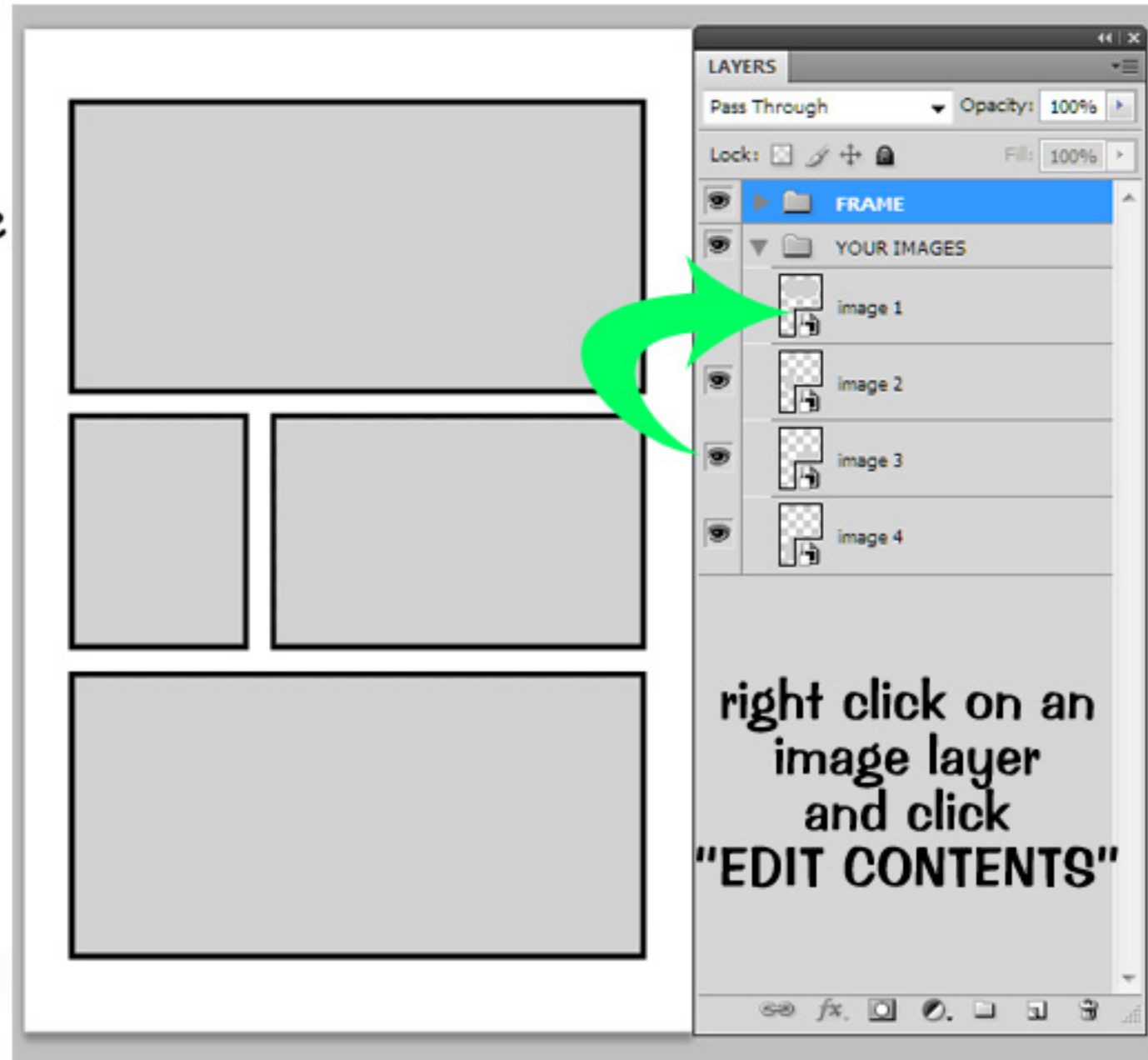


4-panel-vert6.psd




Once the file is open it should look like this as long as you selected the right file to open. Locate your "LAYERS" window and click on the down arrow on the "YOUR IMAGES FOLDER" All these layers are "Smart Objects" and can be edited simply by RIGHT CLICKING on the layer and selecting "EDIT CONTENTS"

Do this for the "IMAGE 1" Layer



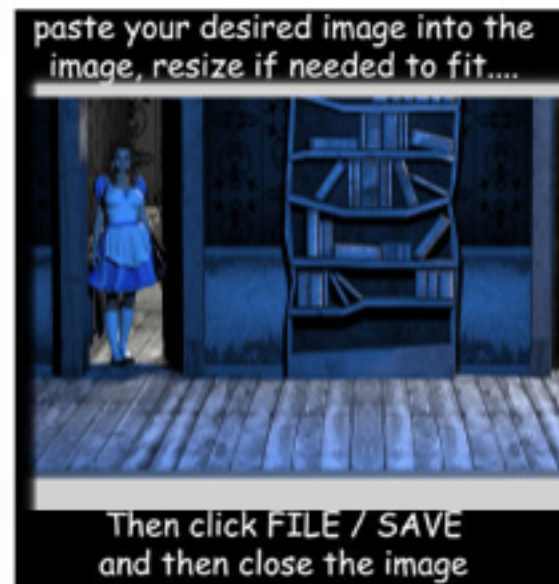
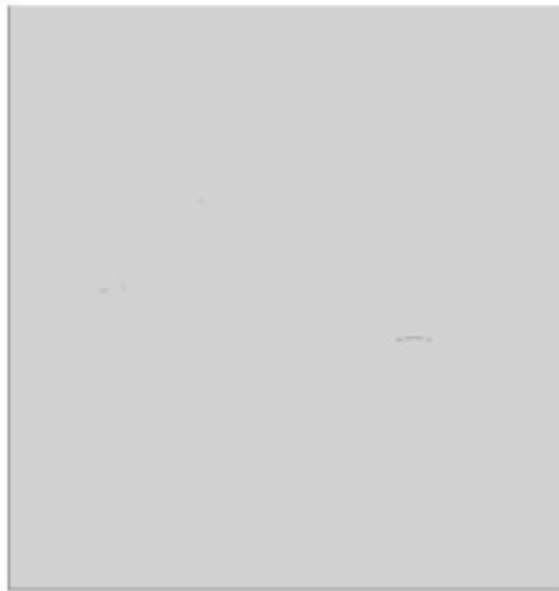
Now you should have a new tab opened with the image shown to the left here.

This is your editable image layer.

Simply drag your desired image into this image tab and resize as needed, once you have FULLY covered up the placeholder graphic you may either turn off the placeholder layer by clicking on the  button OR by just deleting the placeholder layer.

When you are satisfied simply click on FILE / SAVE Located at the top left of your Photoshop Screen.

Then you may close this image tab to return to your panel template page.

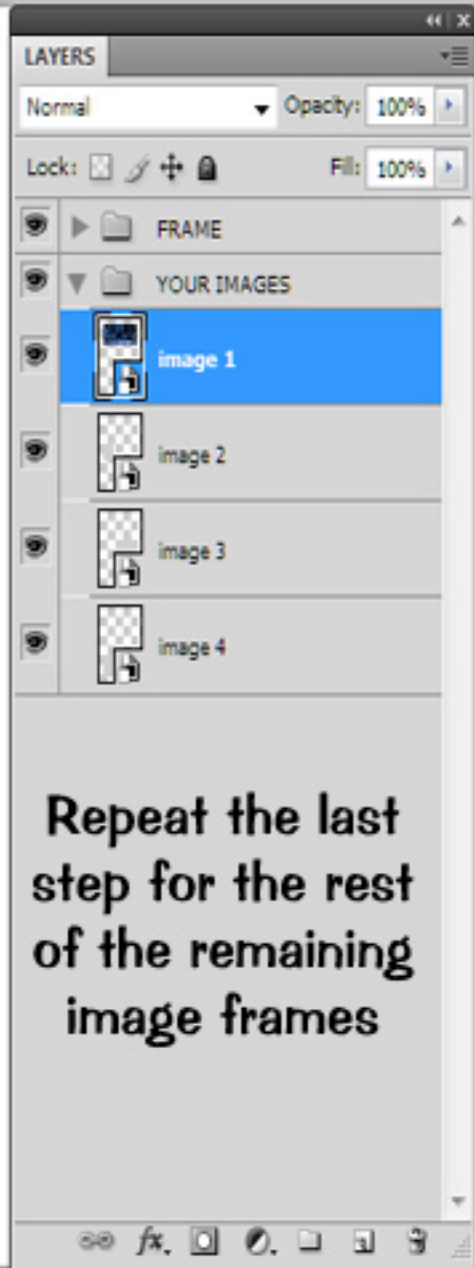


Once back at the panel template you **SHOULD** see your desired image taking up **ALL** of the frame.

**IF NOT:** Simply repete the last step to adjust the size of your image inside the frame.

When you are happy with the results, move to the next layer and once again **RIGHT CLICK / EDIT CONTENTS**.

Do this for **ALL** remaining Image Placeholders.





When you have finished editing all of the Image Placeholders your Template is ready to be saved.

To do this simply click on FILE / SAVE AS

(or whatever way you normally save images)  
and name your image the proper page number.

you may also add cosmetic tweaks to the page before that  
such as page number, arrows, or even tweaks to the  
frame itself.

