

# ADVANCED PUSSY

The female genitalia and anus  
with a powerful control system.

A Product by

Laudanum



Advanced Pussy User's Manual

# ADVANCED PUSSY

## Basic Information

Advanced Pussy was created as a solution for the most frustrating problems with 3D female genitalia: the lack of flexibility. With most female genitalia products out there, it is hard to achieve accurate collisions when inserting – especially irregularly shaped – objects inside the vagina or anus. There are additional morph packs available that might include a vaginal shape which is close, but what if you want the object to be shaped a bit different. Sooner or later, you will probably “run out of morphs”. That won’t happen with Advanced Pussy thanks to its easy to select & use controllers.

## What is Advanced Pussy?

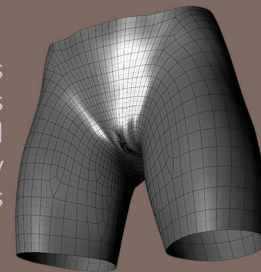
Advanced Pussy is a so-called geograft, which provides a set of conforming female genitalia with vagina and anus for both Genesis 8 Female and Genesis 8.1 Female. Advanced Pussy allows a level of customization and control never seen before in similar products. It is designed from the ground up to be the most versatile female genitalia and anus you’ll ever use for your Genesis 8 figure in DAZ studio.

With its unique bone-based approach, Advanced Pussy offers a brand-new way of adjusting, customizing, and posing the female genitalia and anus. Advanced Pussy is composed of almost 200 bones, which all correspond to a specific part of the female genitalia and anus. All these bones can be manipulated the way you need them to allowing you absolute control over the pose and shape of Advanced Pussy. This approach makes it easier to craft accurate collision when an irregular-shaped object – like a cube or whatever object you can think of – is inserted in the vagina or anus. All bones are easy to select and can be manipulated with visually appealing controllers, which offer a fun new way to interact with your figure’s pussy and anus.

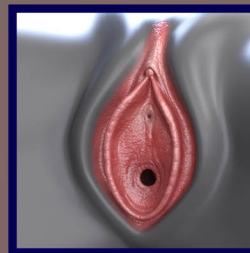
## Components of Advanced Pussy:

### Advanced Pussy Geograft

The core component of Advanced Pussy, this geograft is a conforming female genitalia figure for Genesis 8 or Genesis 8.1 Female. It is composed of 183 bones for nearly unlimited posing possibilities. Advanced Pussy is protected by a rigidity map, which means it will work with almost any of the various characters or morphs available for G8F/G8.1F.



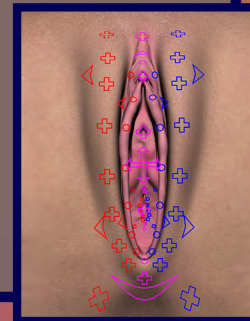
### Advanced Pussy Geoshell



The geoshell creates a perfect duplicate of the figure’s geometry for texturing. By adding an opacity map to the geoshell, the textures of the geoshell and the character blend together. This technique allows Advanced Pussy to seamlessly blend with the texture of virtually any G8F/G8.1F characters you have in your library. Advanced Pussy includes several opacity maps to help you customize the degree of blending.

### Advanced Pussy Controls

These unique and easy to select controllers offer an easy and fun way of interacting with Advanced Pussy. Select a controller and then simply move, rotate, or scale to pose Advanced Pussy. No more hunting for the proper morph in the parameters or pose pane. No difficulties in adjusting an existing pose preset to your needs. Just pose Advanced Pussy right inside the viewport. How cool is that?

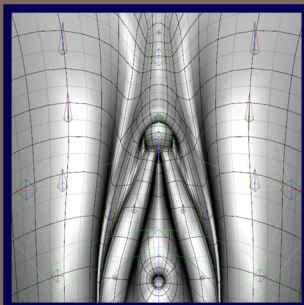


# ADVANCED PUSSY

## Features of Advanced Pussy:

### Topology built for deformation

A good topology is very important when it comes to deforming a mesh. If you don't have proper edge flow, you'll end up with very unnatural deformations when you pose your figure. I spent a lot of time designing the topology of Advanced Pussy until I was completely satisfied with the deformation when the figure is posed.tttt

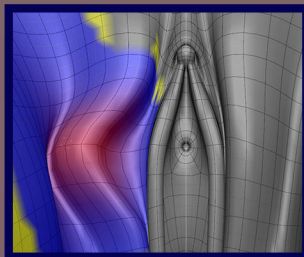


### Enough bones for complete control

Every part of Advanced Pussy has one or more bones associated with it, allowing you to move, scale and rotate to your heart's content. I did a lot of testing to make sure that Advanced Pussy has the optimal number and placement of bones to ensure amazing results. Free yourself from the constraint of morphs by adjusting any part of Advanced Pussy exactly how you want.

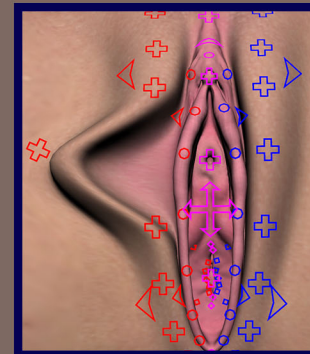
### Optimal weight mapping

Good topology and bone placement is only part of the equation. Without any weight map a moving bone doesn't do anything. I took a lot of time to carefully paint the weight map, until the deformation of every bone was perfect – especially when pulled really far.



### Easy to select controllers

Advanced Pussy comes with a set of controllers that are easy to select. These controllers provide a unique and fun way to pose the female genitalia and anus. You no longer have to search through a list of morphs with confusing names hoping that maybe one of them will do what you need. Instead, simply select a controller and move it however you like.

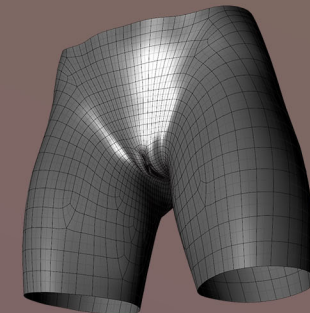


### Blends perfectly with every character

Transfer the material from your character to Advanced Pussy with the included one-click material transfer action for a seamless blend. As long as the character utilizes the default UVs (most of them do), the material blending is completely seamless. Furthermore, Advanced Pussy is protected by carefully crafted rigidity groups and maps that ensure a perfect fit with any morphs and characters.

### A bigger capture region

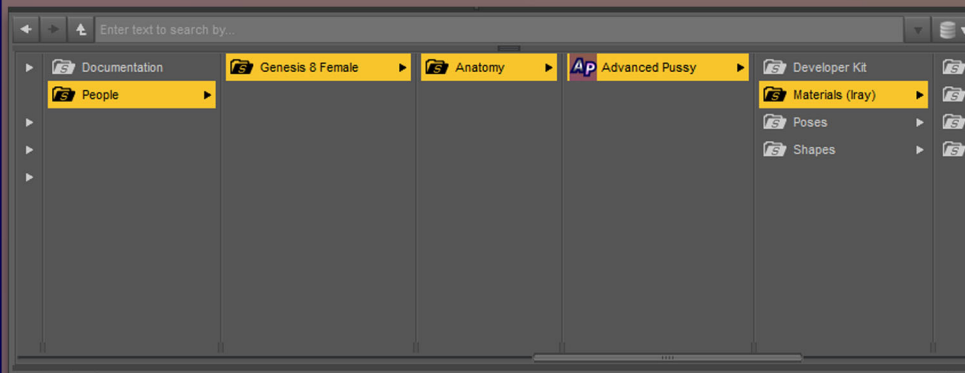
Most female genitalia for DAZ Studio only cover a very small area of the character making it very hard to edit or to use it with other software. Advanced Pussy replaces the entire hip area making it especially easy to edit and manipulate as well as to create custom morphs and poses for it.



# ADVANCED PUSSY

## Where are my files?

Advanced Pussy and all its relevant files are located in your content library under People/Genesis 8 Female/Anatomy. Inside the Advanced Pussy folder, you will find easy to follow hints on how to use Advanced Pussy as well as neatly organized presets by categories such as materials, shapes and poses.



## Installation

### Using DAZ Install Manager:

Advanced Pussy is DIM compliant, which means it can easily be installed using the DAZ Install Manager. All you need to do is to first place the zip file you want to install in the DIM downloads folder. This folder is usually located under Documents\DAZ 3D\Downloads. Please check within DIM if you use a different folder path. The proper folder is usually called "packages". Place the zip file in the packages folder and then close and restart DIM. This is necessary for DIM finding the new ZIP and listing the product. If everything went right, you should find Advanced Pussy in the "Ready to Install" tab of DIM. Please make sure that you have a fitting Sort Order set or search for the product using the search field above. Once you found Advanced Pussy in the list just click on Install and you are all set.

### Manual Installation:

Per default your DAZ library should be located under Documents\DAZ3D\Studio\MyLibrary. Unzip the downloaded archive. Inside you will find a content folder containing three folders named data, people, and runtime. Simply merge those folders with the folders inside your content library. Or copy or move the content from the three folders to the according folders with the same name in your content library and you are done.

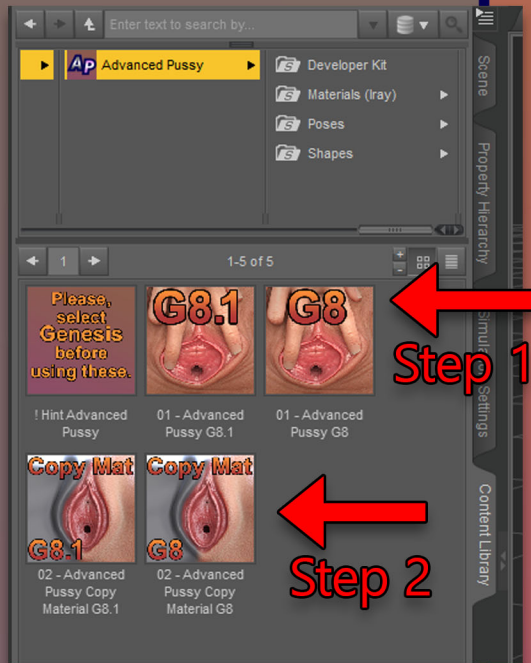
Make sure that especially the content of the data and runtime folders is installed to the proper path otherwise Advanced Pussy won't load and work properly.

# ADVANCED PUSSY

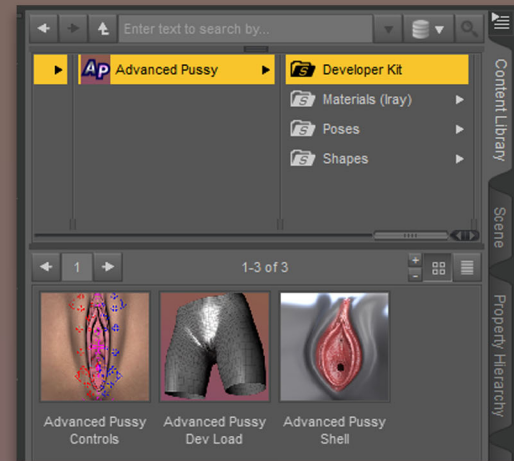
## Using Advanced Pussy:

Using Advanced Pussy is a simple 2-step-procedure: Load and select a Genesis 8/8.1 Female figure in your scene. Then double click on the Step 1-icon for either G8 or G8.1 to load Advanced Pussy on your figure. Then – having your Genesis 8/8.1 Female still selected – double click the step 2 Copy Material icon for either 8 or 8.1 which will copy your figure's material to use them on Advanced Pussy for a perfect fit.

Please redo the second step for copying over your characters materials after every material change you do to your figure.



If you prefer to manually load all the necessary files, you will find them in the Developer Kit folder. If you choose to load them in one at a time from there, make sure Advanced Pussy is selected before loading the geoshell and the controllers or they will not work properly.



For additional convenience, Advanced Pussy uses hierarchical presets whenever possible, which means that you don't need to select Advanced Pussy when using any of its presets such as material, shape or pose. Unless otherwise mentioned, you should always have your Genesis 8/8.1 Female selected when working with Advanced Pussy and the content library.

# ADVANCED PUSSY

## Materials:

### Pussy:

These materials will only affect the pussy part of Advanced Pussy and are meant for the Advanced Pussy **geoshell** only. These are hierarchical materials so please always select your G8F/G8.1F figure to apply the materials to the Advanced Pussy geoshell.

### No SSS material variations:

The drawback of using a geoshell is that we can see through it when using sub surface scattering. Depending on the character underneath this can cause problems. To help with this issue, I included a "(No SSS)" variation for each material. Please note that these materials will look very dark in the viewport, but they will look correct in your final render.

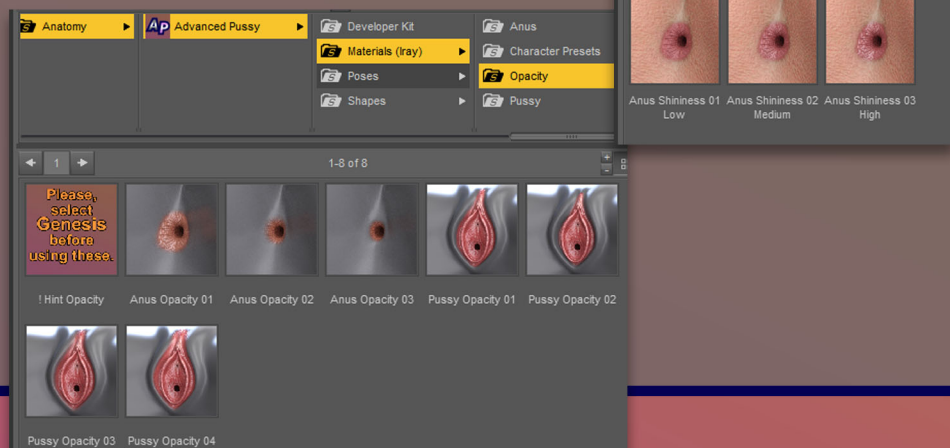


### Anus:

These materials will only affect the anus part of Advanced Pussy and are meant for the Advanced Pussy **geoshell** only. These are hierarchical materials so please always select your G8F/G8.1F figure to apply the materials to the Advanced Pussy geoshell.

### Opacity:

Opacity materials allow you to change the way the Advanced Pussy geoshell blends with your G8F/G8.1F figure. There are dedicated opacity maps for both the anus and the pussy which are meant for the geoshell only. These are hierarchical materials so please always select your G8F/G8.1F figure to apply the materials to the Advanced Pussy geoshell.

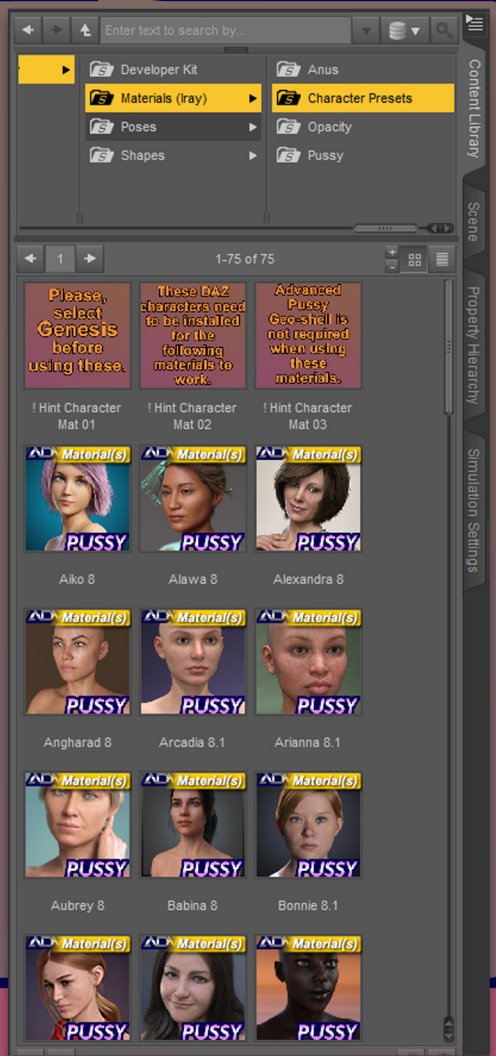


# ADVANCED PUSSY

## Character Presets:

Advanced Pussy includes texture support for some Genesis 8 Female base figures like for example Aiko 8. Simply use the character preset materials to get a perfect blend with Advanced Pussy. But be sure that you own the character, and have it fully installed otherwise you will receive an error message if the necessary material from the base figure is not found.

The character preset materials are meant for the Advanced Pussy **geograft** only and if you are using them, it is recommended to completely remove the Advanced Pussy **geoshell** from your scene, which is not needed in this case. These are hierarchical materials, so please always select your G8F/G8.1F figure to apply the materials to Advanced Pussy.



## Poses:

In the poses folder, you will find a collection of base and penetration poses for both the anus and vagina. These are also hierarchical poses so simply select your G8F/G8.1F figure to easily have to poses applied to Advanced Pussy.



# ADVANCED PUSSY

## Shapes:

In the shapes folder you will find a collection of shape presets for Advanced Pussy that are neatly organized by anatomical region such as anus or clitoris for example. These are hierarchical shape presets, so please always select your G8F/G8.1F figure to apply the shape to Advanced Pussy.



That's it for now.

Thank you so much for purchasing Advanced Pussy and for your support.

Have fun exploring Advanced Pussy.

