

LOKI'S
VENDOR HELPER
COMIC BOOK EDITION



FEBRUARY 2014

ACTION **PANEL**
PAGE **TEMPLATES**

LOKI'S
VENDOR HELPER
COMIC BOOK EDITION

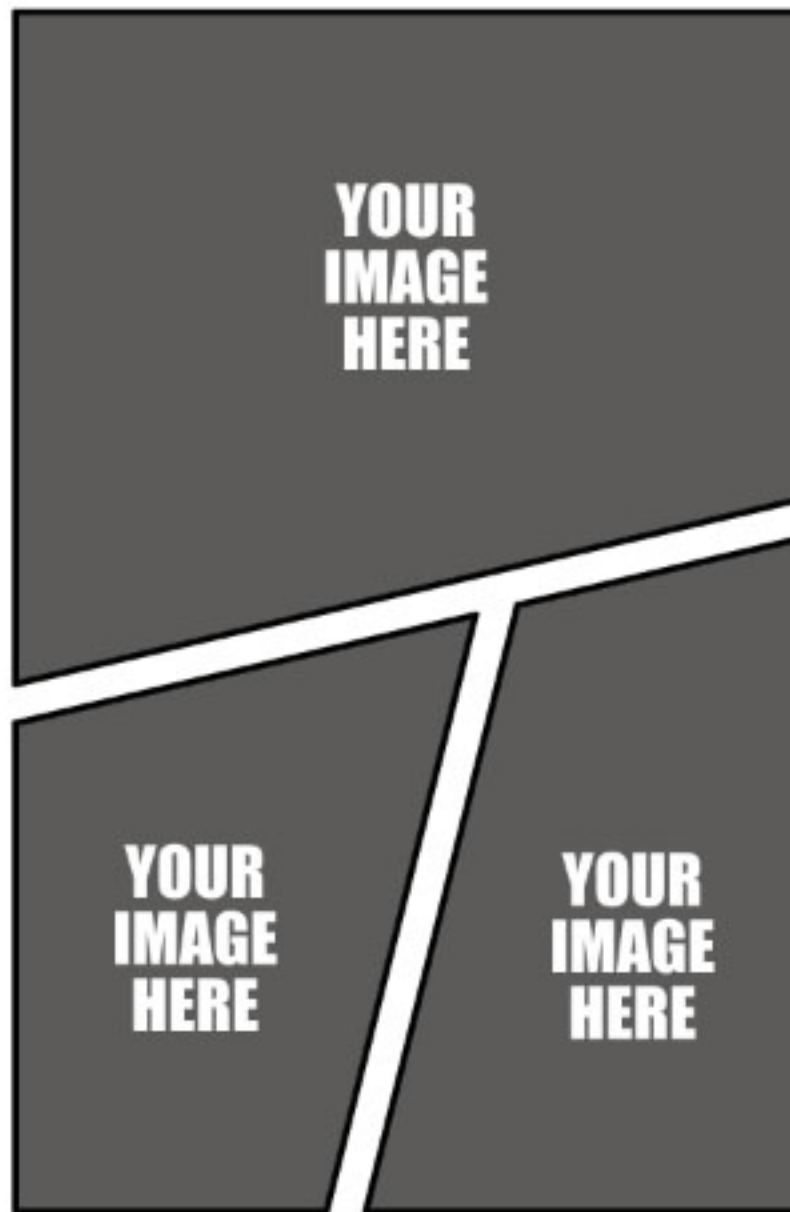


FEBRUARY 2014

THANKS FOR BUYING LOKI'S "ACTION" COMIC BOOK PAGE TEMPLATES!

IN THIS WALKTHROUGH YOU'LL LEARN THE EASY STEPS TO USING THESE TEMPLATES FOR YOUR OWN COMICS.

IF YOU LIKE THIS PRODUCT PLEASE LEAVE ME A MESSAGE, AND IF THERE IS SOMETHING YOU'D LIKE TO SEE ADDED TO MY VENDOR HELPER LINE PLEASE LET ME KNOW AND I WILL TRY TO CREATE IT AND GET IT ADDED TO MY CGBYTES.COM STORE.



LAYERS

Normal Opacity: 100%

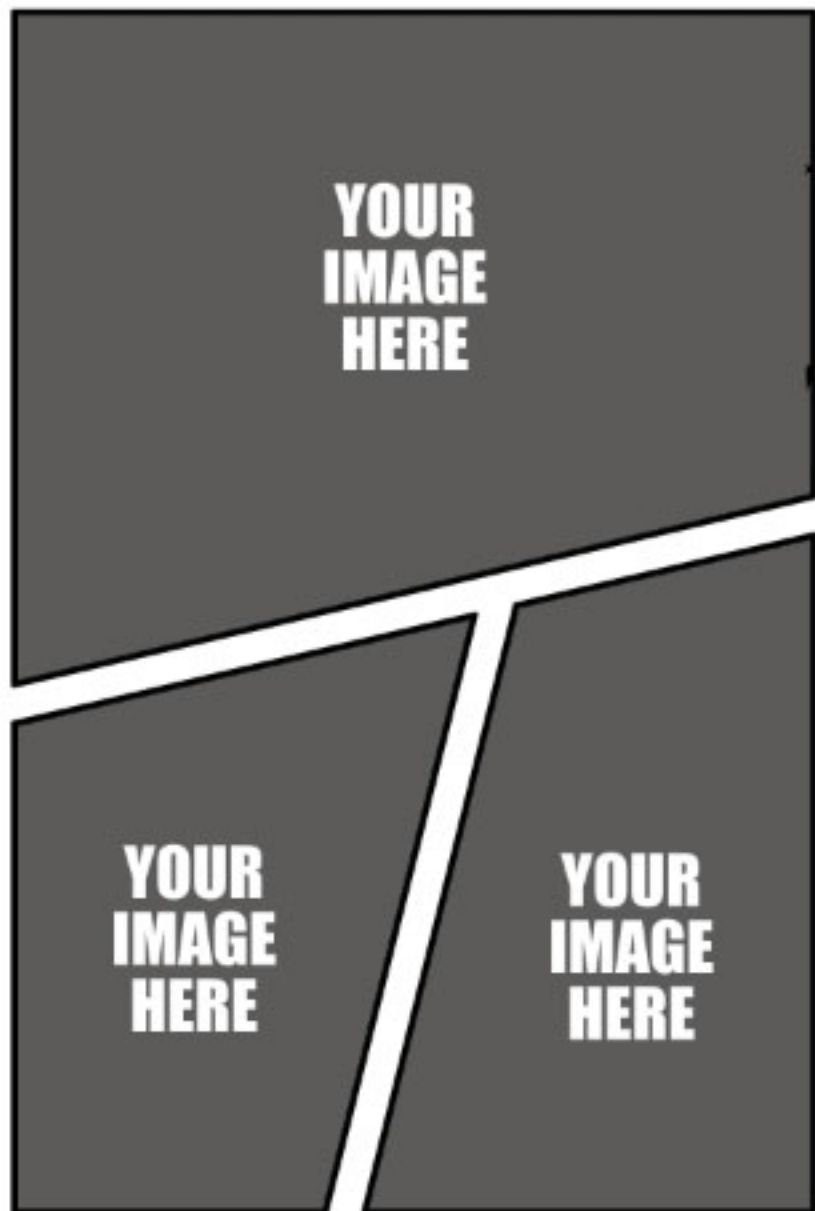
Lock: Fill: 100%

- frame
- your images
 - 1**
 - 2
 - 3

OPEN YOUR DESIRED ACTION PAGE TEMPLATE IN PHOTOSHOP.

CLICK THE "YOUR IMAGES" FOLDER TO OPEN IT AND THEN CLICK ON ONE OF THE IMAGE LAYERS

fx [] [] [] []



LAYERS

Normal Opacity: 100%

Lock: [] [] [] []

frame

your image

1

2

3

RIGHT CLICK THE IMAGE LAYER AND SELECT: "EDIT CONTENTS"

- Layer Properties...
- Blending Options...
- Duplicate Layer...
- Delete Layer
- Convert to Smart Object
- New Smart Object via Copy
- Edit Contents**
- Export Contents...
- Replace Contents...
- Rasterize Layer
- Disable Layer Mask
- Disable Vector Mask
- Create Clipping Mask
- Link Layers
- Select Linked Layers
- Select Similar Layers
- Copy Layer Style
- Paste Layer Style
- Clear Layer Style
- Merge Layers

fx []

**YOUR
IMAGE
HERE**

LAYERS

Normal

Opacity: 100%

Lock:

Fill: 100%



1

**NOW YOU SHOULD SEE
YOUR FRAME TEMPLATE
OPENED IN A NEW TAB.**

**IF THERE ARE ANY
'FLAWS' IN THE FRAME
USE THE PAINTBRUSH
TOOL AND FILL THEM
IN BEFORE PUTTING
YOUR IMAGE INSIDE
THE FRAME.**

**MOST OF THE FRAMES
WILL NOT NEED ANY
EDITING, BUT THIS ONE
NEEDED THE RIGHT SIDE
FIXED (IT'S CORRECTED
IN YOUR DOWNLOAD)**





- New
- Duplicate Layer...
- Delete
- Layer Properties...
- Layer Style
- Smart Filter
- New Fill Layer
- New Adjustment Layer
- Layer Content Options...
- Layer Mask
- Vector Mask
- Create Clipping Mask Alt+Ctrl+G
- Smart Objects
- Video Layers
- Type
- Rasterize
- New Layer Based Slice
- Group Layers Ctrl+G
- Ungroup Layers Shift+Ctrl+G
- Hide Layers
- Arrange
- Align Layers To Selection
- Distribute
- Lock All Layers in Group...
- Link Layers
- Select Linked Layers
- Merge Layers Ctrl+E
- Merge Visible Shift+Ctrl+E
- Flatten Image

- Layer... Shift+Ctrl+N
- Background From Layer
- Group...
- Group from Layers...
- Layer via Copy Ctrl+J
- Layer via Cut Shift+Ctrl+J



LAYERS

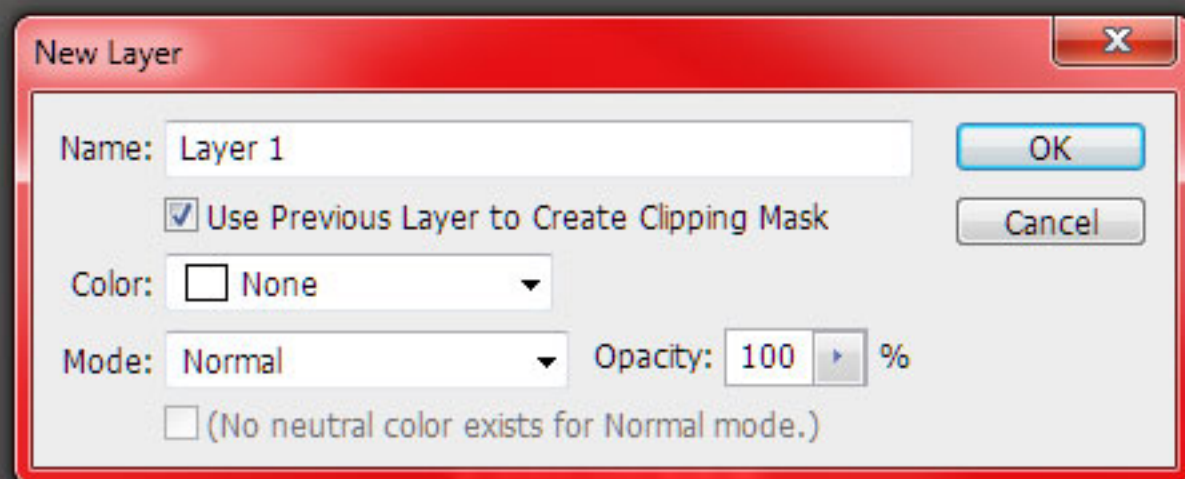
Normal Opacity: 100%

Lock: [] [] [] Fill: 100%

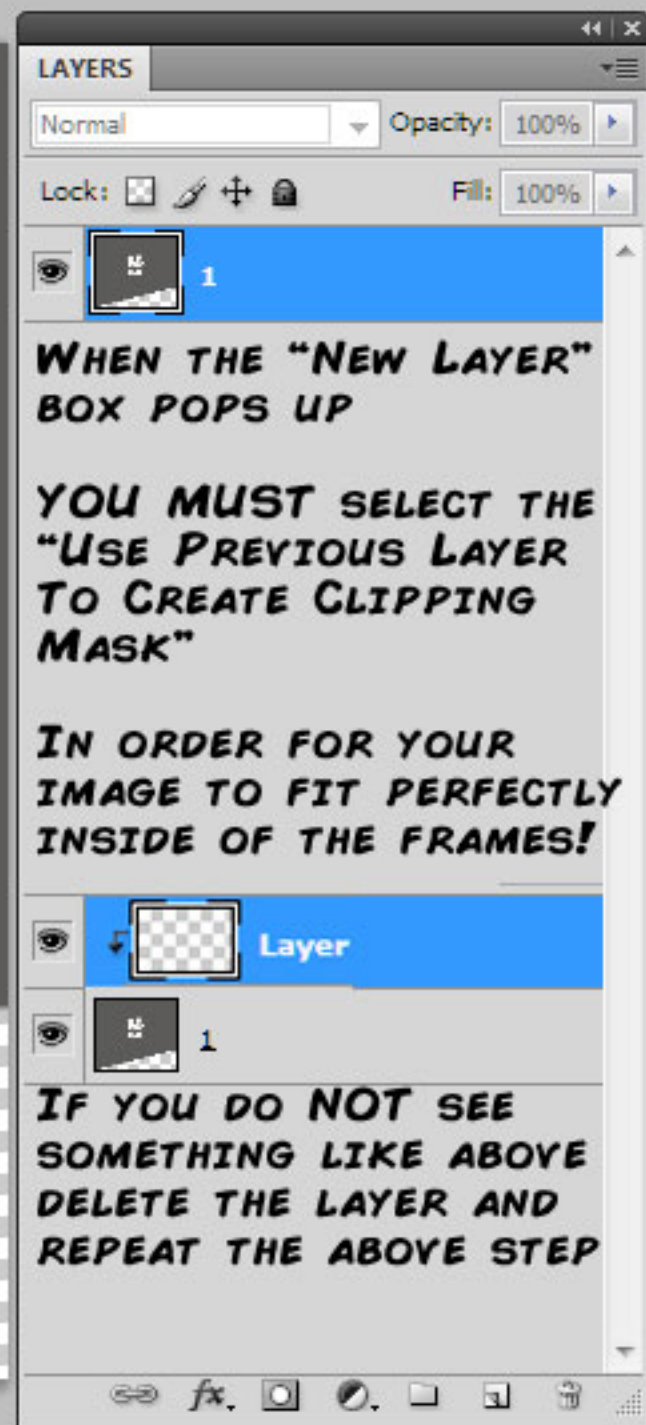
1

WHEN READY TO BRING YOUR IMAGE INTO THE FRAME, CLICK ON LAYER NEW / LAYER

fx [] [] [] [] [] []



HERE

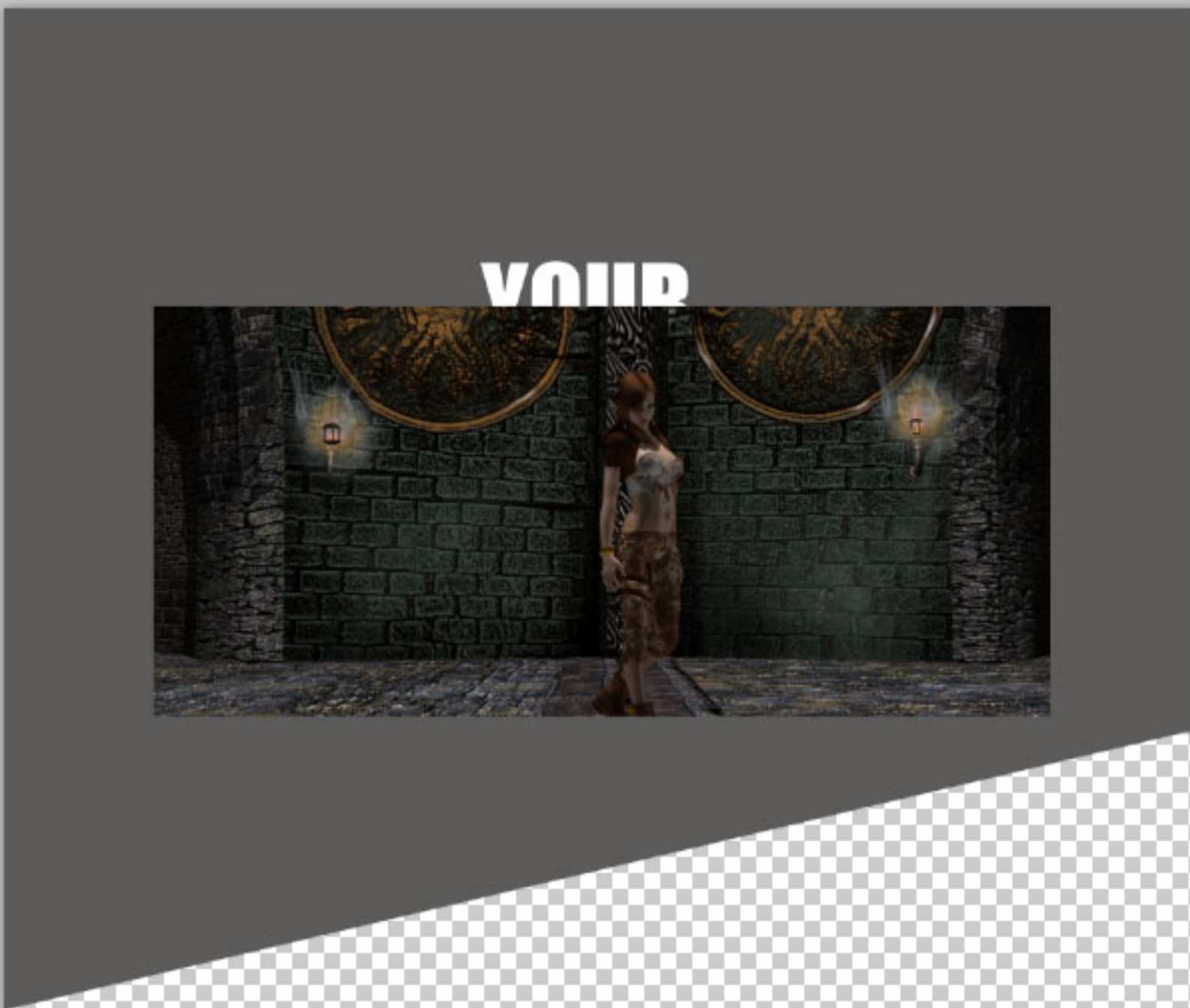


3pan

- Undo Paste Ctrl+Z
- Step Forward Shift+Ctrl+Z
- Step Backward Alt+Ctrl+Z
- Fade... Shift+Ctrl+F
- Cut Ctrl+X
- Copy Ctrl+C
- Copy Merged Shift+Ctrl+C
- Paste Ctrl+V
- Paste Into Shift+Ctrl+V
- Clear
- Check Spelling...
- Find and Replace Text...
- Fill... Shift+F5
- Stroke...
- Content-Aware Scale Alt+Shift+Ctrl+C
- Free Transform Ctrl+T**
- Transform
- Auto-Align Layers...
- Auto-Blend Layers...
- Define Brush Preset...
- Define Pattern...
- Define Custom Shape...
- Purge
- Adobe PDF Presets...
- Preset Manager...
- Color Settings... Shift+Ctrl+K
- Assign Profile...
- Convert to Profile...
- Keyboard Shortcuts... Alt+Shift+Ctrl+K
- Menus... Alt+Shift+Ctrl+M

city: 100% | Flow: 100%

3% (Layer 3, RGB/8) * x | 1.psb @ 33.3% (Layer 1, RGB/8#) * x | paige-tents-test.png @ 66.7% (Layer 0, RGB/8) x



LAYERS

Normal Opacity: 100%

Lock: [] [] [] [] Fill: 100%

- Layer 1
- 1

NOW YOU WILL NEED TO RESIZE AND ROTATE YOUR IMAGE TO FIL THE FRAME, CLICK EDIT / FREE TRANSFORM

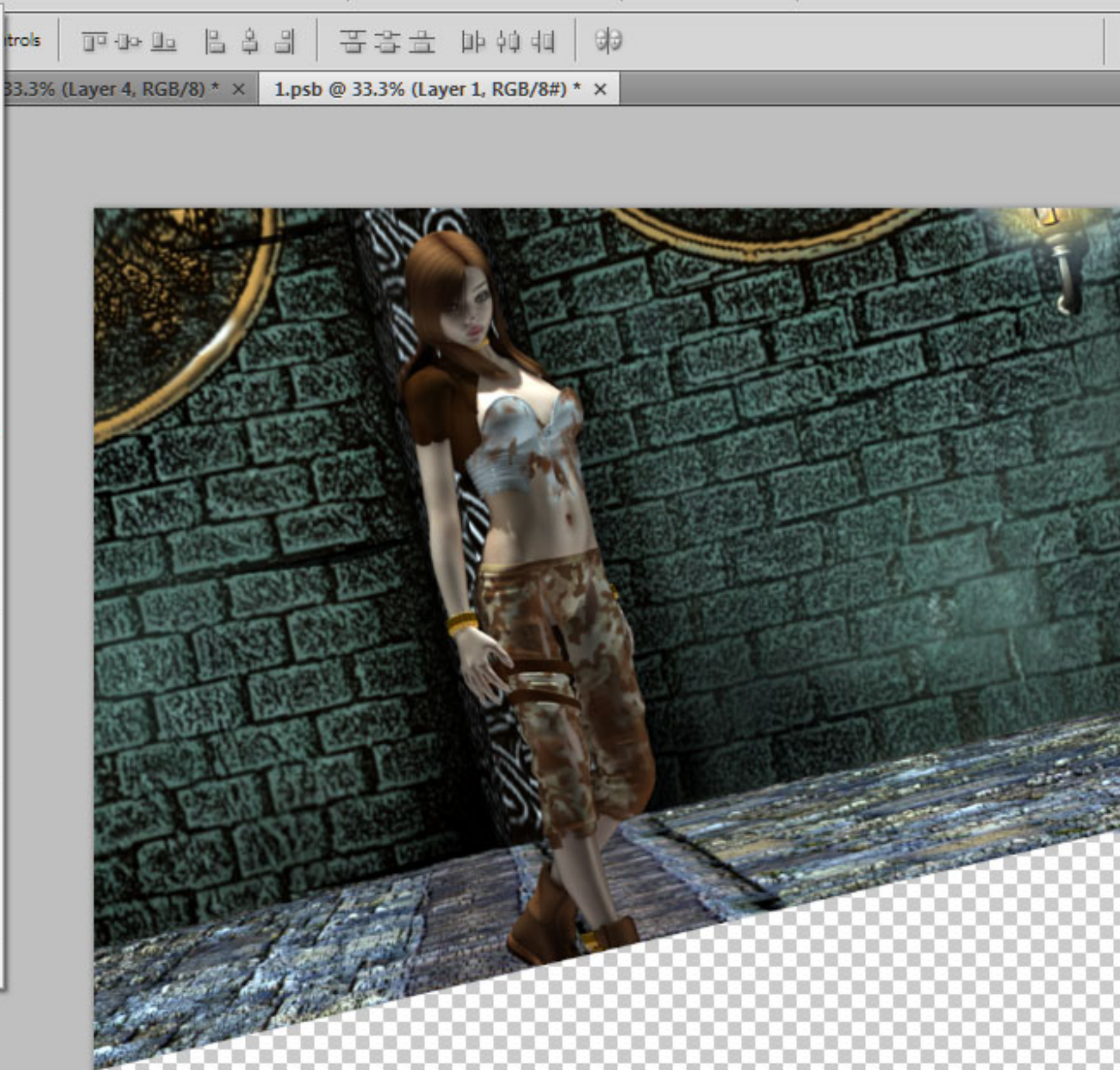
AND MAKE ANY ADJUSTMENTS YOU NEED TO MAKE YOUR IMAGE FILL ALL OF THE COLORED FRAME.

ONCE YOU ARE HAPPY WITH THE RESULTS CLICK THE "ARROW" IN YOUR TOOLBAR SHOWN BELOW.



fx [] [] [] [] [] [] [] []

- New... Ctrl+N
- Open... Ctrl+O
- Browse in Bridge... Alt+Ctrl+O
- Open As... Alt+Shift+Ctrl+O
- Open As Smart Object...
- Open Recent
- Share My Screen...
- Device Central...
- Close Ctrl+W
- Close All Alt+Ctrl+W
- Close and Go To Bridge... Shift+Ctrl+W
- Save Ctrl+S**
- Save As... Shift+Ctrl+S
- Check In...
- Save for Web & Devices... Alt+Shift+Ctrl+S
- Revert F12
- Place...
- Import
- Export
- Automate
- Scripts
- File Info... Alt+Shift+Ctrl+I
- Page Setup... Shift+Ctrl+P
- Print... Ctrl+P
- Print One Copy Alt+Shift+Ctrl+P
- Exit Ctrl+Q



LAYERS

Normal Opacity: 100%

Lock: Fill: 100%

Layer 1

1

ONCE YOU HAVE APPLIED YOUR TRANSFORM TO THE IMAGE YOU MUST SAVE THE IMAGE.

SIMPLY CLICK ON FILE / SAVE

THEN YOU MAY CLOSE THIS IMAGE TAB AND RETURN TO YOUR PAGE TEMPLATE.

fx



**YOUR
IMAGE
HERE**

**YOUR
IMAGE
HERE**

LAYERS

Normal Opacity: 100%

Lock: Fill: 100%

frame

your images

1

2

3

***NOW YOU SHOULD SEE
YOUR IMAGE IN THE
FRAME.***

***REPEAT THE SAME STEPS
FOR THE REMAINING
IMAGE HOLDERS.***

fx



LAYERS

Normal Opacity: 100%

Lock: Fill: 100%

frame

your images

1

2

3

ONCE YOU ARE ALL DONE PUTTING IN YOUR IMAGES SIMPLY SAVE THE IMAGE OR YOU MAY ADD ANY FINAL TOUCHES TO YOUR PAGE FIRST SUCH AS SPEECH BUBBLES SOUND EFFECTS OR PAGE NUMBERS.

(IF YOU DO NOT HAVE ANY YOU CAN PICKUP MY SPEECH BUBBLE PACKAGE OR Soud EFFECTS PACKS AT WWW.CGBYTES.COM

JUST SEARCH "LOKI" IN THE STORE CATALOG)

fx. [] [] [] [] []