

# wild BUSH 4 Meipe's G9 Golden Palace ©MIKE1954 2023

## wild BUSH 4 Meipe's G9 Golden Palace ©MIKE1954 2023

Thank you for purchasing wild BUSH 4 Meipe's G9 Golden Palace!  
Look for more exciting sets coming soon to Renderotica.com!

Hair prop for Meipe's G9 Golden Palace that follows applied morphs.

Opacity maps can be edited in any picture editor - all shapes are possible.

The opacity Maps can be found here:

...\Runtime\Textures\MIKE1954\ Genital Hair for Golden Palace G9

Default Anus Hair.png

Default Bottom Hair.png

Default Bottom no Anus Hair.png

Default Front Hair.png

Default Hair.png

Default no Anus Hair.png

Default Top Hair.png

Full Front Hair.png

Full Hair.png

Full no Anus Hair.png

Less Anus Hair.png

Less Bottom Hair.png

Less Bottom no Anus Hair.png

Less Default Hair.png

Less Default no Anus Hair.png

Less Front Hair.png

Less Full Hair.png

Less Top Hair.png

The product contains 25 morphs:

Attract

Bend

Bigger

Bottom Shorter 1

Bottom Shorter 2

Clumps

Curl

Force Diagonal Down

Force Diagonal Up

Force X

Force -X

Force Y

Force -Y

Force Z

Force -Z

Longer

Noise

Open 1

Open 2

Random 1

Random 2

Smaller

Thicker

Turbulence

Wiggle

The predefined styles are:

Clumps

Default

Near

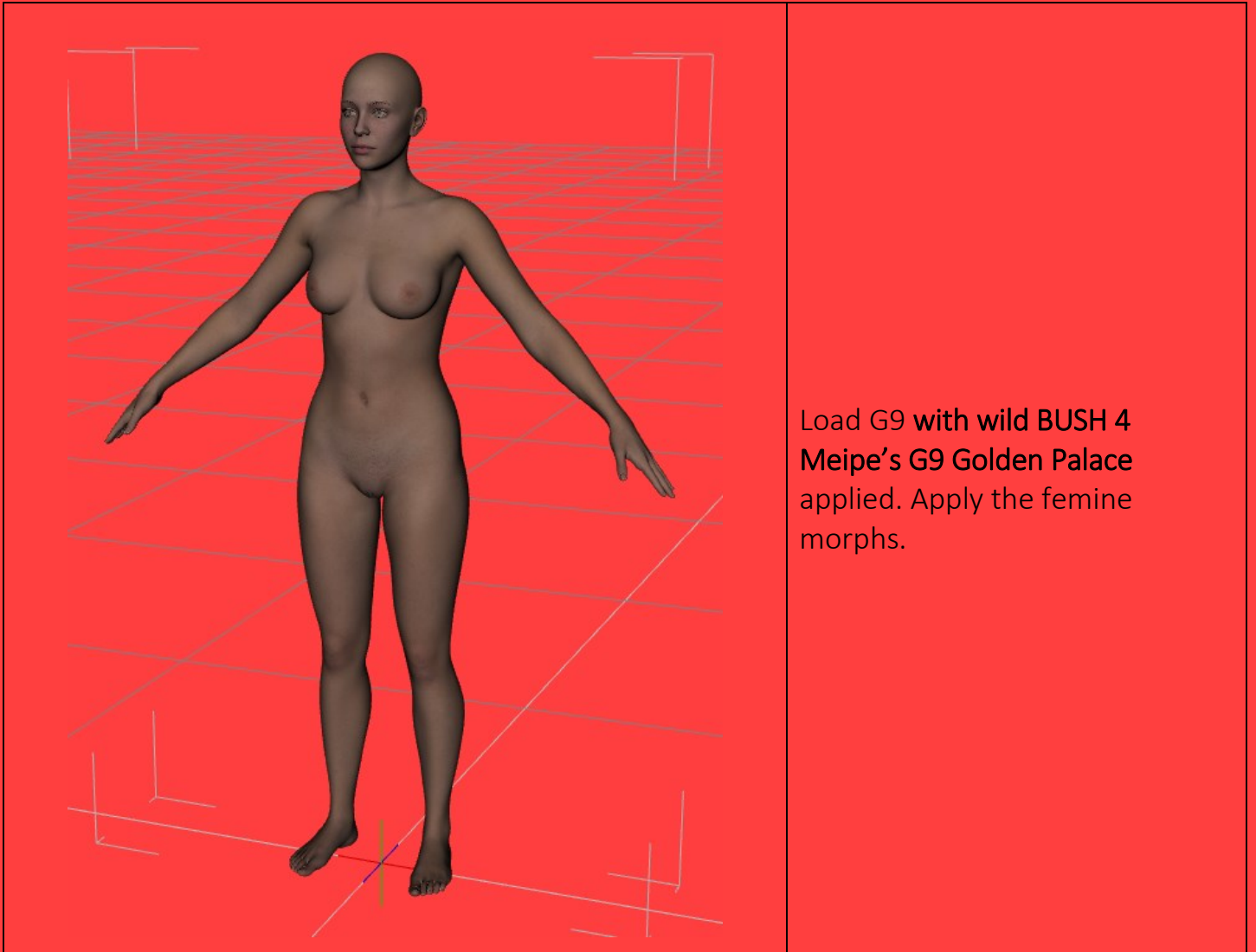
Short

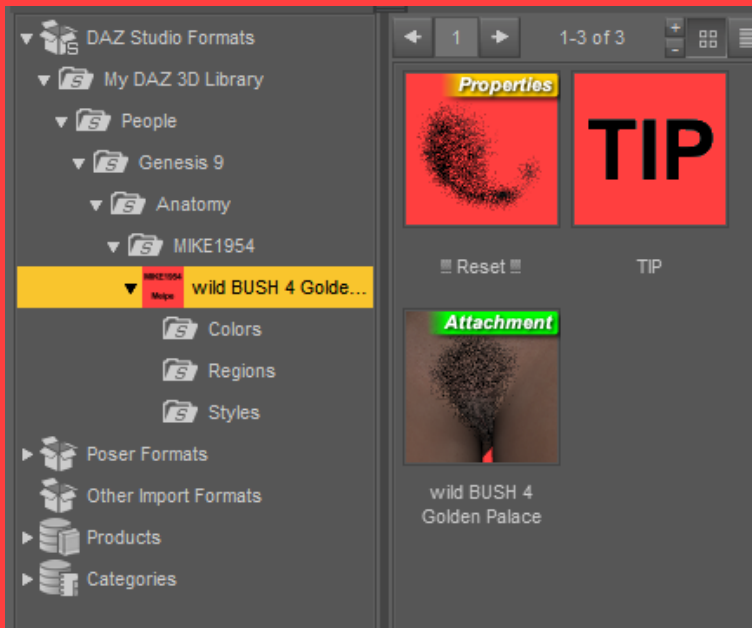
Zero

# wild BUSH 4 Meipe's G9 Golden Palace ©MIKE1954 2023

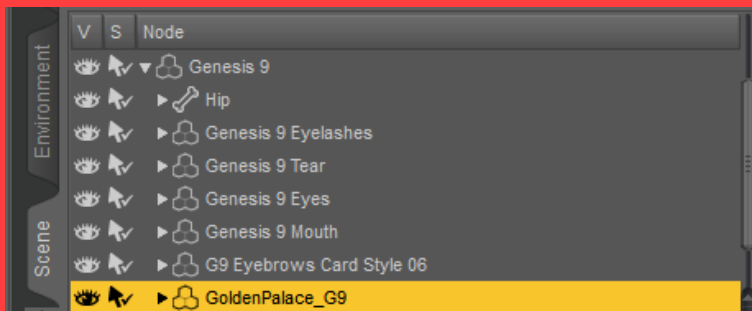
Needed:

Daz Studio 4.21 +  
Genesis9 Female +  
Meipe's G9 Golden Palace

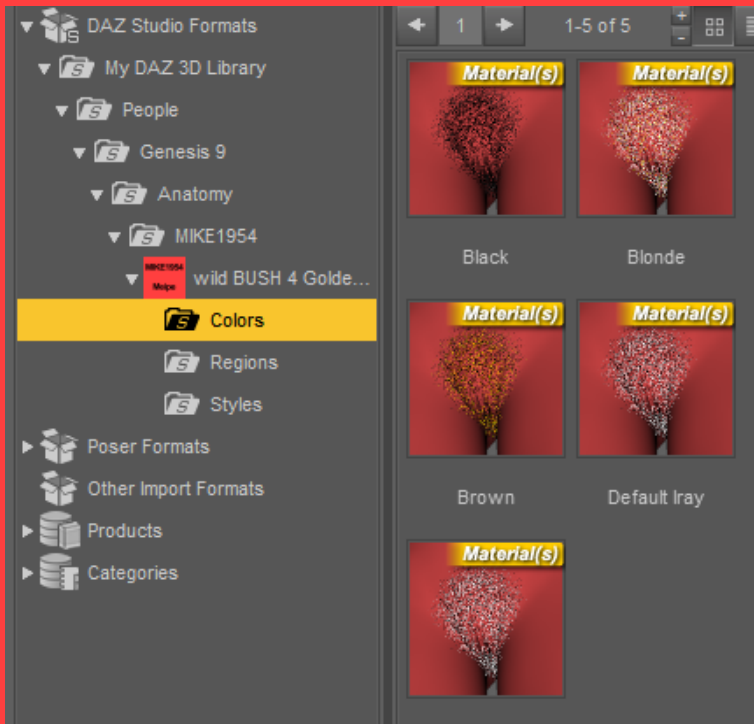




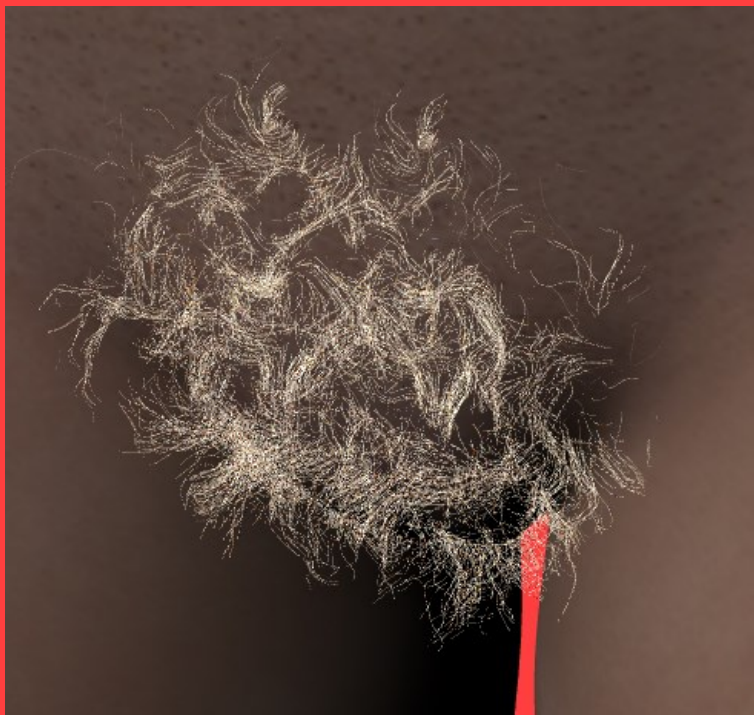
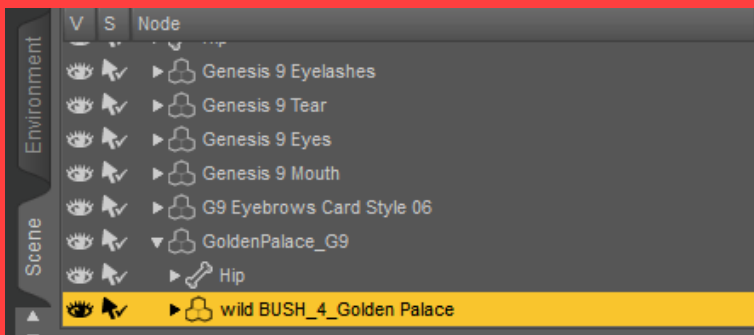
Select Meipe's G9 Golden Palace and load wild BUSH 4 Meipe's G9 Golden Palace.



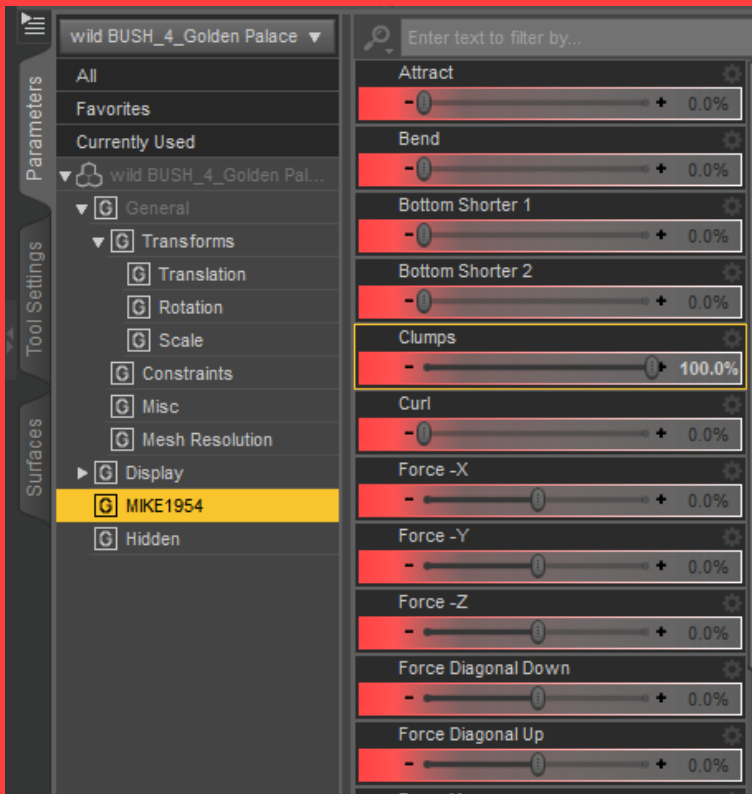
The hair fits automatically to Meipe's G9 Golden Palace.



Load a color-region-style combination



The color-region-style combination is applied.

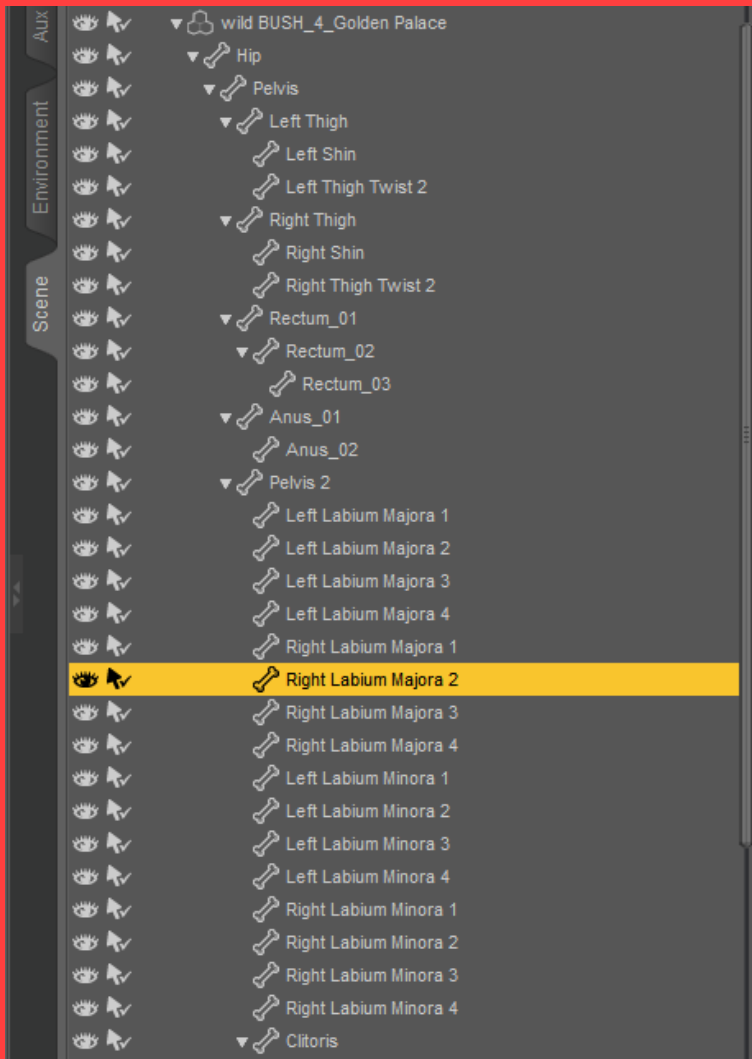


Goto MIKE1954 (the morphs)  
and change appearance.



The appearance changes...





Wild BUSH for G9 Golden Palace is fully rigged - the Universal Tool inside DAZ Studio can be used to modify wild BUSH for G9 Golden Palace.



Deformation of single hairs may be compensated in using

- Tool Settings: Geometry editor
- Select the affected hair(s)
- Repeat Ctrl+ to select the whole hair(s)
- Mouse Right Click
- Geometry Assignment
- Assign to Surface
- Choose Hidden
- Surface - wild BUSH\_4\_Golden Palace - Hidden
- Set opacity to zero
- Tools: Universal



Have fun.. ;-)